

AC Current Sensor

AC Current Sensor

Specifications

Output Signal:

0–5VDC

Output Limit:

8.2VDC

Accuracy:

1.0% FS

Response Time

(10–90% step change):

100ms

Frequency Range:

50–60Hz

Power Supply:

Self-powered

Loading:

1m Ω minimum for rated accuracy; 100K Ω add 1.3% error

Isolation Voltage:

UL listed to 1,270VAC (tested to 5KV)

Input Ranges:

Field-selectable ranges of 10, 20 and 50A

Sensing Aperture:

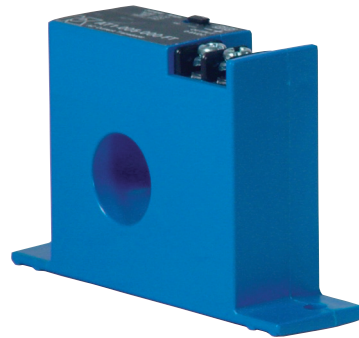
0.75" (19mm) diameter

Case:

Fixed core, top mounted terminals; UL 94V–0 flammability rated.

Operating Temperature:

–20° to 50° C



Combined Transformer and Signal Conditioner

The AC Current Sensor combines a transformer and a signal conditioner into one package. The AC Current Sensor has a selectable input range and an industry standard 0–5VDC output. The AC Current Sensor is designed for application on "linear" or sinusoidal AC loads and is housed in a solid-core case.

Features and Benefits

- Factory machined and calibrated single piece transducer is more accurate than traditional two-piece field installed solutions.
- "Average Responding" algorithm gives an RMS output on pure sine waves. Perfect for constant speed (linear) loads.
- Jumper-selectable input range reduces inventory and eliminates zero and span pots.
- Output is magnetically isolated from the input for safety.
- Insertion loss (voltage drop) is eliminated through isolation.
- UL, cUL and CE approved

(800) 255-8090
sales@burk.com
www.burk.com

7 Beaver Brook Rd
Littleton, MA 01460

Solutions you can use. Experience you can trust.SM
Specifications subject to change without notice. Copyright © 2011 Burk Technology, Inc.

BURK
TECHNOLOGY