

Slimline Remote Control

Ethernet I/O

The Plus-X line of Ethernet I/O devices allows greater and more economical expansion than ever before.

Transmitter Interfaces

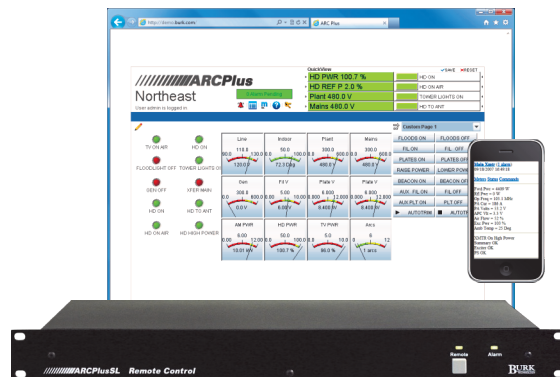
The PlusConnect™ line of transmitter interfaces make connecting to today's most popular transmitters easy and budget-friendly.

AutoPilot® 2010

Use the optional AutoPilot 2010 software to manage your ARC Plus systems along with legacy ARC-16, GSC3000 and VRC2500 remote controls.

Compatible with all ARC Plus Systems

When used with an ARC Plus remote control, conditions on the SL are visible on the ARC Plus front panel and accessible via the optional Enhanced Speech Interface.



- IP-based broadcast remote control for exceptional scalability
- Easy operator access via web, PC software or smartphone
- Selective alarm email and SMS alerts allow efficient fault resolution
- Ready for expansion—scales to 256 metering and status channels, 256 relay pairs and 512 virtual channels

Affordable IP-Based Control

Built on the proven ARC Plus platform, the ARC Plus SL provides affordable, full-featured broadcast remote control in a slim, 1RU footprint. With all the power of the ARC Plus system—plus compatibility with any ARC Plus—the ARC Plus SL redefines economical IP-based remote control.

IP-Based Control Built for the Realities of Broadcast

Bandwidth-friendly, the ARC Plus SL is optimized for real-world broadcast links, eliminating the need for costly legacy solutions.

Efficient, Flexible Alarm Notification

Alert appropriate personnel with selective alarms. Targeted alerts via email or SMS assure the proper response.

Better Access than Ever Before

The ARC Plus SL supports a wide range of operator access options. The built-in web interface allows access from any PC without installing software. Mobile access is possible using the mobile web interface. Manage a single site or many sites from a PC using the optional AutoPilot 2010 software.

Built-in Support for Jet™ Active Flowcharts

The Jet Active Flowcharts option makes intelligent automatic site control easier than ever. Create automatic functions quickly by drawing simple flowcharts—no code required. Automatic functionality is built into the ARC Plus SL, eliminating the need for a full-time PC connection.

Accessories

AutoPilot® 2010

AutoPilot 2010 merges the robust performance of the ARC Plus with the power and convenience of PC-based facility management.

Plus-X Integrated Input Unit

Each Plus-X Integrated Input Unit connects 16 metering and up to 32 status channels to the ARC Plus.

Plus-X Integrated Command Relay Unit

Each Plus-X Integrated Command Relay Unit facilitates the connection of up to 16 command channels to the ARC Plus (8 raise/lower pairs or 16 individual relays).

Plus-X 300

The Plus-X 300 eight-channel I/O interface adds eight metering or status inputs and eight relay outputs to any ARC Plus remote control system.

Plus-X AC-8

The Plus-X AC-8 eight remote outlet controller makes it easy to manage power to 120V equipment at remote locations.

PlusConnect™

The PlusConnect line of direct transmitter interfaces allows a single serial or Ethernet connection between the ARC Plus and many popular transmitters.

For a full list of accessories, visit www.burk.com.

Specifications

Dimensions:

1.75" (4.45cm) H
19" (48.26cm) W
12" (30.48cm) D

Operating Temperature/Humidity:

0° to 40° C; 5 to 85% RH

Power Requirements:

100 to 240VAC, 47-63Hz, 1A;
Power entry module with standard,
grounded power cord supplied;
1A fuse protection

Memory:

Non-volatile flash memory stores user-configuration data for 20 years without power; Battery-backed real-time clock retains date/time information for 25 years

Communication Ports:

RJ45 jack for 10BaseT Ethernet connection to AutoPilot®, AutoLoad, Web Interface (built-in) and Plus-X I/O devices.

Front Panel Interface:

Remote Button:

"Remote" button for suspending the generation of command outputs

Alarm & Remote Indicators:

Designate alarm conditions and link-loss events

About Burk Technology

Burk Technology leads the industry in transmitter remote control and monitoring, offering innovative approaches to total station control and operation.

Founded in 1985, Burk Technology's sole objective is to build facility management and remote control systems that appeal to stations of all sizes around the world.

Today the company's solutions are considered to be "best-in-class" and continue to evolve, anticipating economic, regulatory and technological changes.