



autopilot<sup>®</sup>  
PLUS

Quick Start Guide  
AutoPilot Plus 1.0

Thank you for purchasing the AutoPilot Plus software for the ARC Plus. With AutoPilot Plus you will be able to monitor, control, and log your network of ARC Plus and ARC-16 sites from one central location. Additionally, AutoPilot Plus allows you to monitor SNMP devices on your network.

This Quick Start Guide will walk you through the process of installing AutoPilot Plus and setting up your first network of sites.

Before getting started with AutoPilot Plus, complete the setup and configuration of your ARC Plus system(s) using AutoLoad Plus.

## Installing AutoPilot Plus

---

Before installing AutoPilot Plus, please make sure your computer meets the following **minimum system requirements**:

- 1 GHz or faster processor
- Windows® XP or Windows 2000 Professional
- 512MB RAM
- 100MB free hard drive space
- 1024x768 (or higher) screen resolution

To install AutoPilot from CD:

1. Insert the AutoPilot Plus CD in your CD ROM drive. If Autorun is enabled for this drive, a menu screen will open automatically. Otherwise go to My Computer and double-click the CD ROM drive. The menu screen will automatically launch.
2. Choose install and follow the on-screen instructions to complete the installation.

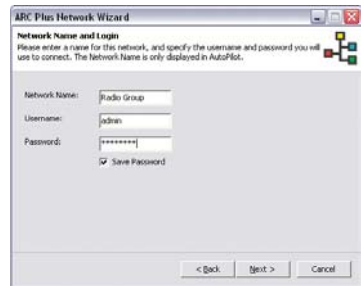
# Creating An ARC Plus Network

To access your site(s) in AutoPilot, you will need to create an ARC Plus Network. When you create the Network, you will be able to add ARC Plus sites that you have configured in AutoLoad, along with any ARC-16's connected to those sites.

To create an ARC Plus Network:

1. Choose **New ARC Plus Network...** from the **File** menu or from the toolbar. This will open the ARC Plus Network Wizard.

2. The first page will prompt you to enter a name for the Network and the username and password used to connect to the site. Usernames and passwords are set using AutoLoad Plus. Enable the Save Password option if you want to connect to this site without entering login credentials each time.

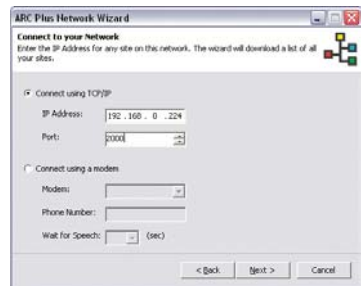


Click **Next** to continue.

*Note: Save Password must be enabled for automatic logging.*

3. Choose a connection method for this ARC Plus Network.

For a TCP/IP connection (recommended), **enter the IP address** of any ARC Plus in the network.



For a modem connection, select a modem and **enter the phone number** for the site. If the unit is also used for dial-up telephone access, choose how long to wait for the speech interface to finish its greeting. If no speech interface is installed, choose N/A.

*Note: Dial-up modem connections provide access to one site per modem connection.*

Click **Next** to continue. The Network Wizard will now connect to the site, and the connection progress is displayed.

- Once the Network Wizard has connected to the site, a list of available sites will be displayed. **Select the ARC Plus and ARC-16 sites** you want added to this Network.

*Note: An ARC-16 site cannot be added without the parent ARC Plus selected.*



Click **Next** to continue.

- Verify the connection settings for each site.** If you want AutoPilot to maintain a continuous connection to this site, check the Keep Connected option.

*Note: The IP address displayed is the Public IP specified on the ARC Plus.*



Click **Next** to continue.

- Select the site(s) you wish to log** and the desired logging interval. You can enable/disable logging and edit logging properties at a later time by editing the Network or right-clicking the site in the Navigator.

Click **Next** to continue. Setup is complete. Click **Finish** to close the Wizard and add the network.



Your first ARC Plus Network has now been added. To edit this Network in the future, right-click the Network in Navigator and choose **Edit Network**.

If you selected the Keep Connected option in step 5, AutoPilot will automatically attempt a connection to the site. Otherwise, manually connect to the ARC Plus Network by selecting it in the Navigator and clicking the **Connect** icon in the toolbar.

## Exploring Additional Features

---

Now that you've added your ARC Plus network to AutoPilot Plus, you're ready to monitor and control the sites in your network. To get even more out of AutoPilot, take advantage of the built-in tools for data management, customized displays, and network device management (including SNMP monitoring).

### Reports

As long as at least one site has logging enabled, you will be able to create customized reports to show telemetry, events, alarms, etc. To get started, go to **File > New... > New Report** icon in the toolbar. This launches the Report Wizard, which will guide you through the process of creating reports.

### Custom Views

Custom views allow you to create user-defined screens to show metering, status and command channels, along with alarm indicators, custom text, graphics, and much more. You can navigate from one screen to another, allowing as many views your operation needs. To launch the custom view editor, go to **File > New... > New Custom View**.

### Network Management

You can use AutoPilot Plus to monitor status information (including SNMP monitoring) on network devices unrelated to the ARC Plus. To create a new network device, go to **File > New... > New Network Device**. This opens the Network Device Wizard, which will help you create the device so you can manage it in AutoPilot Plus. Once created, you can view network devices in the Navigator or include them in custom views.

## Getting Help

---

The full user's guide for AutoPilot Plus is included on the CD and is available for download from the support section of our website at [www.burk.com](http://www.burk.com). This section of the website also includes answers to frequently asked questions, product documentation, and software downloads.

If you still need assistance, customer support representatives are available Monday through Friday, 9AM-5PM Eastern by phone and email:

**Phone:** 978-486-3711

**Email:** [support@burk.com](mailto:support@burk.com)

