



QUICK START GUIDE

AUTOPILOT VERSION 3.0

Welcome	3
Upgrading from AutoPilot 2.x	4
Installing AutoPilot	6
Creating New Site	8
Getting Help	13

1

Welcome

Thank you for purchasing AutoPilot control, monitoring, and logging software for the ARC-16. Version 3 is all new and was designed to maximize the capabilities of the ARC-16 system and improve your operation's workflow.

AutoPilot 3 is a significant upgrade from previous versions, giving you even greater control and flexibility for managing your ARC-16 sites. In addition to a new interface and enhancements to existing features, version 3 offers several major new features such as **Custom Views, Virtual Channels, email alarm notification, Macro Editor, automatic report printing, and real-time charting**. Please refer to the AutoPilot 3 User Manual for detailed descriptions and instructions on using these and other new features.

This Quick Start Guide will walk you through the process of installing AutoPilot and setting up your first site.

2

Upgrading from AutoPilot 2.x

Upgrading An Existing Installation

Installing AutoPilot 3 on a computer with an existing AutoPilot 2 installation will remove AutoPilot 2 program files, but will not remove your existing configuration files and scripts. Your configuration files can be upgraded to use with AutoPilot 3.

To automatically upgrade your existing configuration (recommended), install AutoPilot 3 to your AutoPilot 2 folder. Your configuration files will be updated automatically when you run AutoPilot 3 for the first time.

If you choose to install AutoPilot 3 to the default location, or want to use an AutoPilot 2 configuration from a different computer, you will need to copy your existing AutoPilot 2 configuration files (config.mdb and history.mdb) and scripts to the AutoPilot 3 directory. Your configuration files will be updated automatically when you run AutoPilot 3 for the first time.

Important! Once your configuration files have been upgraded for AutoPilot 3, you will not be able to use them with AutoPilot 2. It is recommended that you make a copy of your AutoPilot 2 databases (config.mdb and history.mdb) prior to installing AutoPilot 3. Your script files do not need to be upgraded and can be used in either version.

Program Key & Authorization Codes

During installation and setup you will be prompted to enter your AutoPilot 3 program key and authorization codes. Your codes from AutoPilot 2 are *not* compatible with AutoPilot 3.

Note: Entering an AutoPilot 2 program key during installation will allow you to install the program and run it as a 30-day demo only.

You received your new program key and authorization codes when you purchased this copy of AutoPilot 3. If you are unable to locate your codes, please contact Customer Support for assistance.

3

Installing AutoPilot

Before installing AutoPilot 3, please make sure your computer meets the following **minimum system requirements**:

- 1 GHz or higher processor
- Windows® XP Professional or Home Edition, Windows 2000 Professional with Service Pack 1
- 256MB RAM
- 100MB free hard drive space
- 1024x768 minimum screen resolution (recommended)
- Available COM port for each direct connection
- Bell 212A compatible modem for dial-up modem connection

Note: Large or complex operations may require greater system resources.

Additionally, AutoPilot requires your ARC-16 units have firmware version 5.0 or higher. Version 5.4 or higher is recommended.

Installation Instructions:

Follow the instructions below to install AutoPilot from CD.

1. Insert the AutoPilot CD in your CD ROM drive. If Autorun is enabled for this drive, a menu screen will open automatically. Otherwise go to My Computer and double-click the CD ROM drive. The menu screen should automatically launch.
2. Choose install and follow the on-screen instructions to complete the installation. During the installation you will be prompted to enter the program key you received when you purchased AutoPilot 3.

Note: Your AutoPilot 2 program key is not compatible with AutoPilot 3. Entering an AutoPilot 2 program key will allow you to install the program and run it as a 30-day demo only.

Your program key and authorization codes are included with this CD. If you are unable to locate your codes, please contact Customer Support for assistance.

4

Creating New Site

In order to access your ARC-16 site(s) in AutoPilot, you need to add each ARC-16 unit in the site.

Note: If you are connecting directly to a studio ARC-16, you must define this unit in AutoPilot even though the studio unit may not have any local channels. The unit you are connecting to must always be defined regardless of its configuration.

By default, a demo site titled “Burk Demo Site” is already set up and appears in the Navigator list. This site connects to a demo system at our offices in Littleton, MA. If desired, you can delete this Demo Site at any time.

The first ARC-16 you should set up is the unit that this computer’s primary connection will be to. For example, if you are directly connecting to a studio ARC-16, this unit should be set up first. If this computer is instead dialing in to a remote ARC-16, you should set this unit up instead.

Creating A New ARC-16:

1. Choose “New ARC-16...” from the Site Menu. This will open the ARC-16 Wizard.
2. The first page of the Wizard prompts you to enter information about the ARC-16 unit you are setting up. Enter a descriptive name for this ARC-16, it's serial number, user password on the ARC-16, and Authorization Code. The Program Key should already be filled in. Click **Next** to continue.

ARC-16 Wizard

ARC-16 Parameters

Choose a name for your ARC-16 and enter the serial number and password. These values can be found in the unit's setup menu.

ARC-16 Name: JPMTR

Serial Number: A J017265

Password: _____

Confirm Password: _____

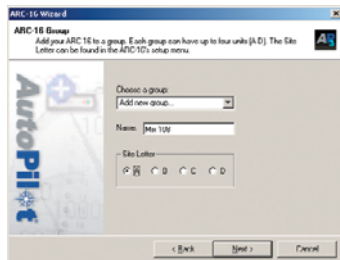
Program Key: XXXXXXXXXXXX

Authorization Code: J704525

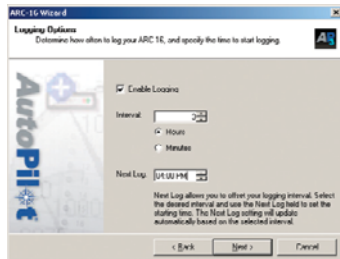
< Back Next > Cancel

Important! Authorization codes correspond to specific program keys that they were issued under. If the authorization code for this unit is registered under a different program key, please enter that program key instead.

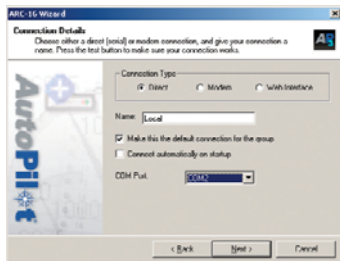
- Each ARC-16 must be part of a group, and every unit that is physically linked together *must* be part of the same group. Since this is your first ARC-16 choose “Add new group...” from the Choose Group box. Type in a name for this Group. Once the group has been defined, select the Site Letter that this ARC-16 is programmed for. Click **Next** to continue.



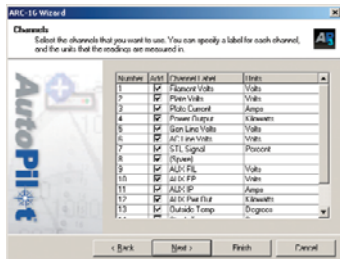
- Select the Time Zone for this ARC-16. Click **Next** to continue.
- If desired, enable logging for this ARC-16. You can also enable this option at a later time if desired. Detailed instructions on logging can be found in the AutoPilot 3 User Manual. Click **Next** to continue.



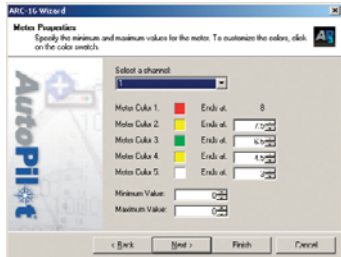
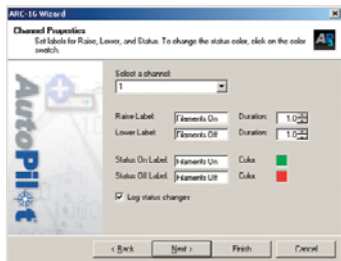
6. Choose Yes to create a new connection. If you choose No, you can create your connections at a later time, however it is recommended you create your first connection now. Choose the Connection Type and give this connection a name. If this will be your primary connection check “Make this the default connection for the group.” Set the additional properties as listed. Click **Next** to continue.



7. Select the channel(s) you want to display on-screen and define the meter label and units for this channel. Labels for your channels are not downloaded from the ARC-16. Click **Next** to continue.



8. Select a channel from the drop down list and define the status and command labels, command durations and status colors. Click **Next** to continue.
9. Select a channel from the drop down list and define the meter range and colors. Click **Next** to continue.
10. Choose the Default View template to use for this ARC-16. Click **Next** to continue.
11. Select if you want to add this site to the Shortcut Bar and/or want to connect to the site right now. Click **Finish** when you are done.



Your first ARC-16 unit has now been set up. Repeat these steps to add additional ARC-16 units to this site. To edit any ARC-16 unit in the future, right-click the unit in Navigator and choose “Edit ARC-16”.

If you did not choose to connect to the site when you hit finish (step 11), you can connect to the site at any time by selecting it from the Navigator list and clicking on the connect toolbar icon. You can also-right click the site and choose connect.

5

Getting Help

Answers to frequently asked questions, product documentation, and software downloads are available on the support section of our website at www.burk.com.

If you still need assistance, customer support representatives are available Monday through Friday, 9AM-5PM Eastern by phone and email:

Phone:

978-486-3711

Email:

support@burk.com

