



Quick Start Guide

December 2002
(REV B)



©2002 Burk Technology, Inc.

Introduction

AutoPilot® 2 gives you the power to monitor and control your entire ARC-16 operation from your PC. The user-friendly meter view and simplified navigation make AutoPilot easy to learn and use. With AutoPilot Scripts, you have the power and flexibility you need for advanced automation. Whether you have one site or dozens, AutoPilot 2 gives you the control you need.

This Quick Start Guide will lead you through the process of configuring and connecting to your sites using the **ARC-16 Wizard**.

For additional help, please consult the help file by clicking on Help in the menu bar.

Upgrading from a Previous Version of AutoPilot

If you have been using a previous **AutoPilot 2.x** version, uninstall the existing AutoPilot software and follow the installation instructions below to get up and running quickly. Your setup information and site data will be retained and automatically incorporated in the new version.

AutoPilot 2 can be installed on the same computer as **AutoPilot DOS** and **AutoPilot 1.x**; however, the new version cannot use data from the DOS and 1.x versions.

AutoPilot LT users must uninstall LT before loading AutoPilot 2. Complete the following steps to use data from LT in AutoPilot 2:

1. Uninstall AutoPilot LT from the Windows “Add/Remove Programs” dialog. Uninstalling LT will *not* remove any configuration or data files.
2. Follow the instructions below to install AutoPilot 2.
3. Once AutoPilot 2 is installed, copy the config.mdb and history.mdb files from the old AutoPilot LT folder (C:\Program Files\Burk Technology\AutoPilot LT) into the new AutoPilot 2 folder (C:\Program Files\Burk Technology\AutoPilot 2). When asked if you wish to replace the existing files, click Yes. *If you select a different destination folder when you install AutoPilot, the location of the config.mdb and history.mdb files will change.*

System Requirements

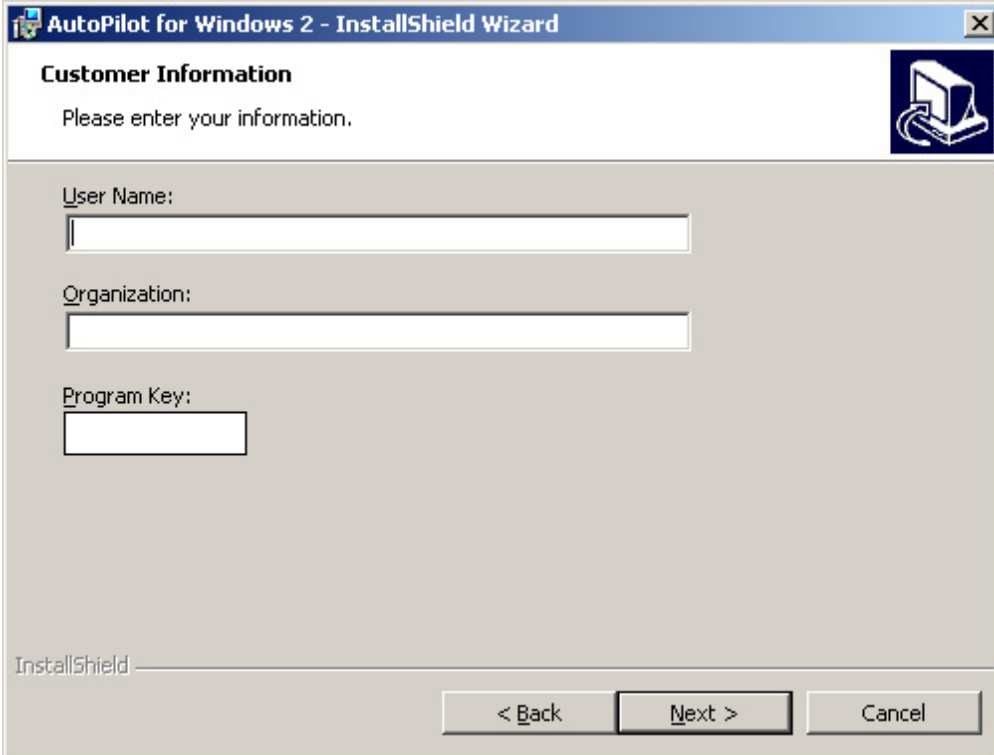
- 400MHz Processor or higher
- 128MB RAM
- Windows XP, 2000 Pro SP1, NT 4.0 SP5
- Microsoft Internet Explorer 4.01 SP2 or newer
- Bell 212A compatible modem (if using a modem connection)
- ARC-16 firmware version 5.0 or higher (5.4 recommended)

Installing AutoPilot 2

To install AutoPilot, put the CD in your drive. The CD Browser should open automatically. If it does not, double click on the icon for your CD-ROM from My Computer, and then run "Launch". *Note: you must have administrative privileges to install AutoPilot.*

Click "Install AutoPilot" to run the installer. When prompted for your Program Key, enter the key supplied by Burk.

Note: AutoPilot ships with a registration sheet, which lists your Program Key and authorization codes. If you need a replacement copy, please contact Burk Technology.



AutoPilot for Windows 2 - InstallShield Wizard

Customer Information

Please enter your information.

User Name:

Organization:

Program Key:

InstallShield

< Back Next > Cancel

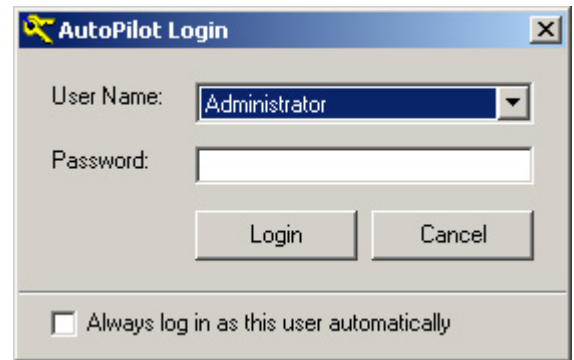
Starting AutoPilot

To run AutoPilot, open the Start Menu, and go to “Burk Technology\AutoPilot 2” and click “AutoPilot”.



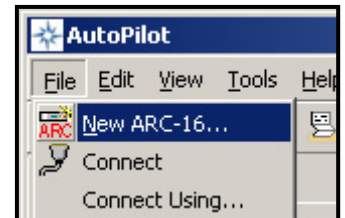
Logging In

When AutoPilot is first installed, it includes one user, “Administrator”, with a blank password. When you first start AutoPilot, log in by selecting “Administrator” from the User list and clicking Login. You can change the password and add more users later (consult the help file for more information).

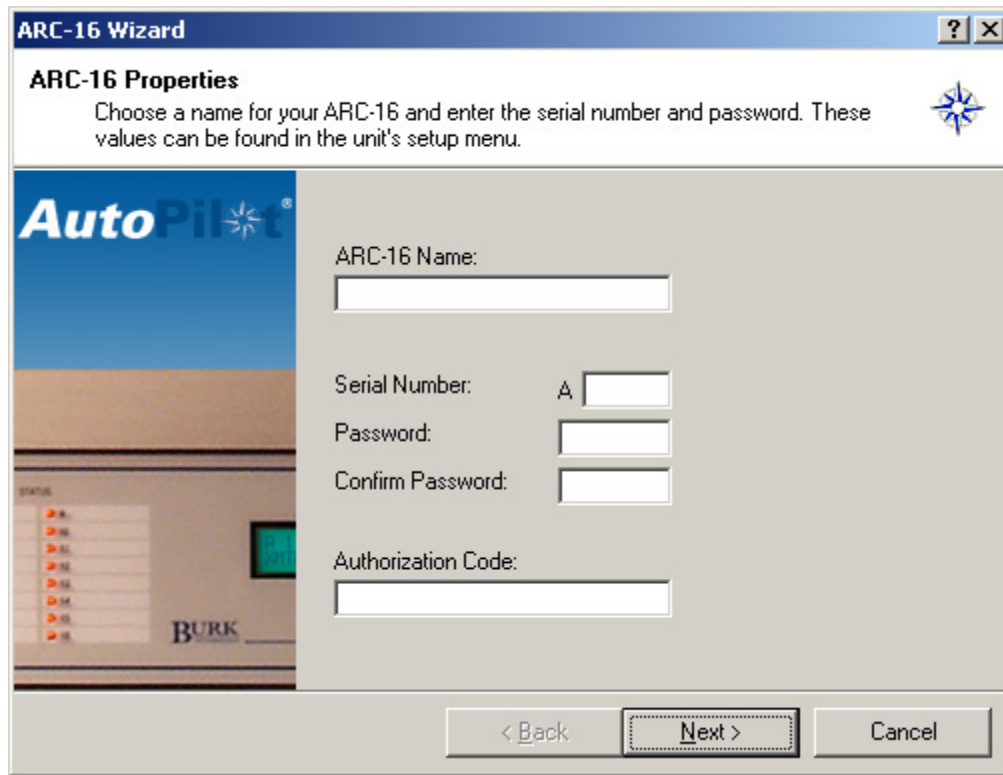


Using the ARC-16 Wizard

The ARC-16 Wizard is used to add ARC-16s to AutoPilot, and can also be used to modify your settings later. To launch the wizard, click “New ARC-16” from the File menu. After each step, press “Next” to continue.



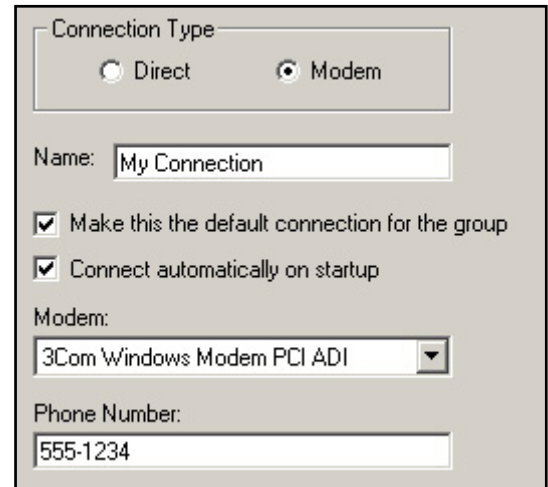
1. **ARC-16 Properties:** Enter a name for this ARC-16, the serial number, user password from the ARC-16, and your authorization code. Note: AutoPilot ships with a registration sheet, which lists your Program Key and authorization codes. If you need a replacement copy, please contact Burk Technology.



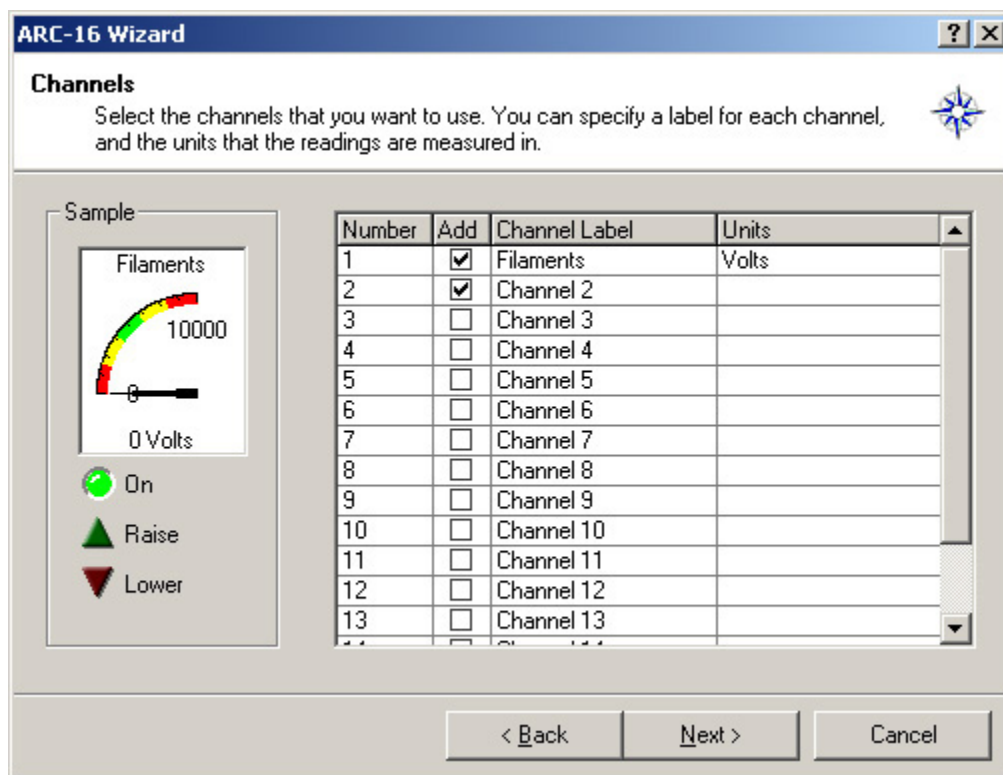
The screenshot shows a software window titled "ARC-16 Wizard" with a sub-header "ARC-16 Properties". Below the header, there is a blue banner with the "AutoPilot" logo. To the right of the banner, there is a text box with the instruction: "Choose a name for your ARC-16 and enter the serial number and password. These values can be found in the unit's setup menu." Below this instruction, there are several input fields: "ARC-16 Name:" with a text box; "Serial Number:" with a dropdown menu showing "A" and a text box; "Password:" with a text box; "Confirm Password:" with a text box; and "Authorization Code:" with a text box. At the bottom of the window, there are three buttons: "< Back", "Next >" (which is highlighted with a dashed border), and "Cancel". On the left side of the window, there is a partial view of a physical device with a screen and buttons, and the "BURK" logo is visible at the bottom.

2. **ARC-16 Group:** Every ARC-16 must be part of a group, even if you have a Stand Alone. A group can have up to four ARC-16s, all connected to each other. To add a new group, select "Add new group..." from the drop down list, and enter a name for the group. Next, select the site letter of your ARC-16.
3. **Time Zone:** Select the time zone in which your ARC-16 is located. You can also enter abbreviations for Standard Time and Daylight Saving Time. These abbreviations will appear when you print reports. If the time zone you are using does not use Daylight Saving Time, be sure to uncheck the box for that option.
4. **Logging:** To enable logging on this ARC-16, check the "Enable Logging" checkbox. Choose either hours or minutes and enter the logging interval. To log starting at a specific time, enter that time for "Next Log". For example, if you want to log every hour on the hour: choose "Hours", enter 1 for the interval, and set the Next Log time for the next hour.

5. **Adding a Connection:** To add a new connection, choose “Yes” and press next. You can add either a Direct connection (using a serial port and null modem cable), or Modem connection. *See Appendix A in the AutoPilot manual (located on the CD-ROM) for null modem cable pinouts.* Enter a name for the connection, and choose the COM Port or Modem that you want to use. If using a modem, you must enter the phone number as well. You can also make this the default connection for the group, which lets AutoPilot connect without prompting you to choose a connection. The default connection can be used to connect to the group automatically at startup if “Connect automatically at startup” is checked.



6. **Add Channels:** Check the box in the “add” column for each channel that you want to add. You can also change the channel name and units for analog readings. *Note: use the sample channel on the left to see what the channel will look like in AutoPilot.*

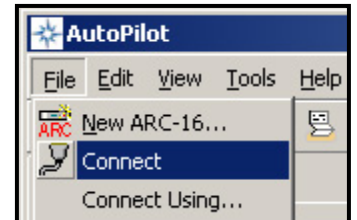


7. **Channel Properties:** For each channel that you want to customize, first select the channel from the drop down list. You can change the raise and lower labels, status on and off labels, command durations, and status indicator colors. Check “Log status changes” to have AutoPilot log each time the status of the channel changes.

8. **Meter Properties:** The appearance of the meter is customizable for each channel. You can change the min and max values, colors, and values where the color changes. Note: you do not have to use all five colors, to use only two colors, for example, set the “Ends at” value for Meter Colors 3-5 to equal the Minimum Value.
9. Press finish to add the ARC-16 to AutoPilot.

Connecting to your ARC-16

To connect to your ARC, click Connect from the File menu. If you set your connection as the default, AutoPilot will connect immediately, otherwise you will be prompted to choose from a list of connections.



Note: if AutoPilot does not properly establish a connection, you may have specified the wrong COM port, modem or phone number in Step 5. If the information there is correct, you may wish to verify the modem's initialization string. Visit the Burk Technology web site at www.burk.com for a list of supported modems and initialization strings.

Additional Help

For more detailed instructions and information on AutoPilot's many other features, please consult the help file, accessible from the Help menu in AutoPilot. Additional information can also be found on our website: www.burk.com.

For technical support, email support@burk.com, or call (978) 486-0086.

