

ClimateGuard LT

Server Room Environmental Monitor

Available Sensors:

- Temperature
- Humidity
- Flood/Leak
- Smoke
- Motion
- Door Contact

Fast Setup with no Software Required

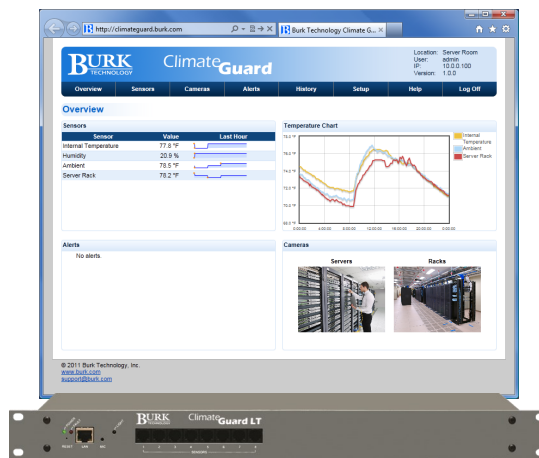
Setting up Climate Guard is easy. Sensors are plug-and-play, allowing you to get up and running in no time. And everything you need is built into the onboard web interface—no software required.

Free US-Based Support

Burk Technology's dedicated US-based support staff is ready to provide whatever assistance you need over the phone or via email. No charges, no contracts.

View a Demo Today

See Climate Guard in action at <http://climateguard.burk.com>



- Built-in temperature, light and sound sensors
- Easily expandable with external sensors
- Integrates with IP security cameras
- Alert personnel via email, SMS and SNMP traps.
- Spot trends and prevent problems from developing with onboard charting.
- Onboard web interface for setup, monitoring and access to historical data and charts

Protect your Equipment and Data

Environmental problems in the server room can cause costly downtime, damage expensive equipment, and even lead to loss of mission-critical data. HVAC equipment failure, power outages, and simple human error can cause catastrophic IT problems—especially after hours. Server rooms and data centers of all sizes require comprehensive monitoring of environmental conditions to detect a problem as early as possible.

Climate Guard monitors temperature, humidity, flood/leak, and many other conditions that can cause serious IT disasters. Email, SMS and SNMP notifications ensure that responsible personnel can respond quickly and effectively.

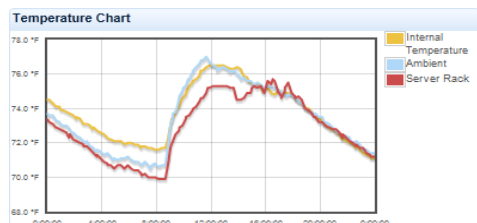
Watch for Early Warning Signs

Not all problems happen suddenly. A change in how equipment behaves over time may be an early warning sign of a serious problem. A gradual rise in temperature or a change in sound level may be evidence of impending equipment failure. Climate Guard's onboard charting allows you to watch for changes in environmental conditions over time, preventing a problem from becoming a crisis.

A Monitoring Solution that Grows with your Needs

Climate Guard's unique modular design allows you to add capacity and features as you need them. Easily add new sensors as you add equipment, and take advantage of new functionality when you need it.

ClimateGuard LT



Sensor	Value	Last Hour
Internal Temperature	77.8 °F	
Humidity	20.9 %	
Ambient	78.5 °F	
Server Rack	78.2 °F	

Built-In Charts

Built-in charting allows you to analyze trends. Climate Guard automatically stores a minimum of four weeks of data for every sensor.

Sensor	Mean	Min	Max	Std Dev	Time in Alert
Server Rack	72.4	69.9	75.7	1.8	0:00:00
Ambient	73.2	70.5	77	2.0	0:00:00
Internal Temperature	73.7	71.1	76.5	1.6	0:00:00

Logged Data Analysis

Analyze logged sensor data using Climate Guard's built-in tools. Show mean, min, max and standard deviation, and how much time each sensor spent in alert.

System Status at a Glance

Quickly get a handle on current conditions with Climate Guard's simple overview. See the current state of each sensor and its activity over the last hour.

Time	Sensor	Value
03/28/2011 15:31:09	Ambient	78.4 °F

Onboard Alert Logging

In addition to sending Email, SMS and SNMP notifications, Climate Guard keeps a record of alert conditions. Logged alerts display when a problem occurred and when it was resolved.

Specifications

Dimensions:

1.75" (4.45cm) H
19" (48.26cm) W
5" (12.7cm) D

Power Requirements:

12VDC, 1A
AC Adapter included

Ethernet:

10/100 full or half duplex

Maximum Sensors:

32 sensors total:
3 built-in sensors
8 powered switch inputs
21 digital sensors (with daisy-chaining)

Front Panel LEDs:

Power, Fault;
Ethernet RJ45 LEDs: Link, Activity

Digital Sensor Inputs:

8 built-in ports for digital sensors and powered switch inputs

Built-In Sensors:

Temperature, sound, light

Operating Temperature:

-40 to 50° C

Temperature Measurement:

± 0.5° C from -10 to 85° C
± 2° C from -55 to 125° C

Humidity Measurement:

0 to 100% RH

Protocols:

HTTP, HTTPS, SMTP, SMTP/SSL,
SNMP v1, SNTP

About Burk Technology

Founded in 1985, Burk Technology is an industry leader in facility management and equipment monitoring.

Leading companies of all sizes trust Burk Technology to ensure reliable operation of mission-critical equipment.

Today Burk's solutions are considered to be "best-in-class" and continue to evolve, anticipating economic and technological changes.