



# Instruction Manual

## Burk Firmware Loader

*Rev B (v.1.0.10)*

Copyright©2019

Burk Technology, Inc. All rights reserved. Information in this manual is  
subject to change without notice.

## USING THIS MANUAL

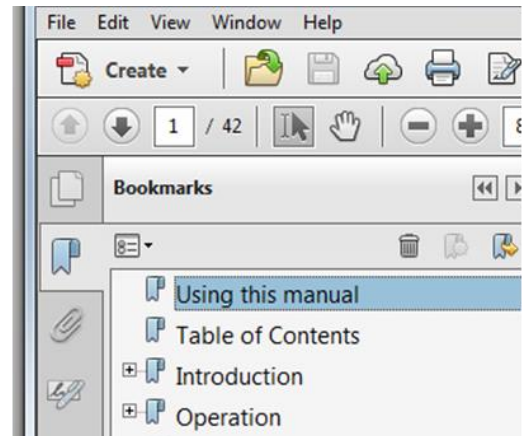
This manual is best viewed as a .pdf on a computer or tablet, as there are many hypertext links to help you get to the section you need. Since most of the initial setup requires a web browser, keeping a copy of the manual in .pdf form on the same machine is recommended.

The .pdf file has bookmarks to help with navigation, so be sure you have a current copy of Adobe Reader on your computer and have the Bookmarks enabled. You can download the most recent version at <http://get.adobe.com/reader/>.

To enable bookmarks, press  and expand the desired section by pressing .

You can also jump directly to a section from the **TABLE OF CONTENTS**. Just click on the section or page number to go directly there.

Please take a few minutes to familiarize yourself with the organization of this manual, as it will likely save time later when you need to find a specific piece of information quickly. Throughout the manual, you will find hypertext links like this: **USING THIS MANUAL**. Click on the link to go directly to the named section.



## TABLE OF CONTENTS

Using This Manual .....	1
Table of Contents .....	2
Introduction and Product Applicability.....	3
Climate Guard/Plus-X EM – Special Instructions .....	4
Plus-X 300 – Special Instructions .....	5
Plus-X 600 – Special Instructions .....	6
Plus-X AC-8 – Special Instructions.....	7
Plus-X Dual IP-8 Adapter - Special Instructions.....	8
Plus-X GSC Adapter – Special Instructions.....	9
Burk Firmware Loader Procedure – Applicable to All products .....	10
Confirm Current Version of Burk Firmware Loader on your Computer .....	10
Back Up Your Configuration .....	10
Download Firmware .....	10
Configure Windows Firewall .....	10
Using the Burk Firmware Loader .....	11
Appendix A: Clearing Your Browser’s Cache.....	13
Firefox Version 71 .....	13
Chrome Version 78.....	13
Edge Version 44.....	13

## INTRODUCTION AND PRODUCT APPLICABILITY

The Burk Firmware Loader is a tool that lets you update Burk firmware when new versions are released. Table 1 provides pertinent information for updating to the latest version of product firmware. Follow the instructions that apply to your specific product.

**Table 1. Product-Specific Instructions for Firmware Uploads**

<b>PRODUCT</b>	<b>Update Process Summary</b>
<b>ARC PLUS</b>	Update to the latest firmware version using the <b>BURK FIRMWARE LOADER PROCEDURE</b> .
<b>ARC PLUS SL</b>	
<b>ARC PLUS TOUCH</b>	
<b>ARC SOLO</b>	
<b>ARCHER</b>	
<b>ARCTURUS</b>	
<b>PLUS-X VSWR</b>	
<b>RF SCOUT PLUS</b>	
<b>DUAL SWITCH CONTROLLER</b>	
<b>CLIMATE GUARD</b>	
<b>PLUS-X 300</b>	If your current firmware version is lower than version 1.0.17, see the product-specific section <b>PLUS-X 300</b> . If your current firmware version is 1.0.17 or higher, update to the latest version using the <b>BURK FIRMWARE LOADER PROCEDURE</b> .
<b>PLUS-X 600</b>	If your current firmware version is lower than version 1.0.10, see the product-specific section <b>PLUS-X 600</b> . If your current firmware version is 1.0.10 or higher, update to the latest version using the <b>BURK FIRMWARE LOADER PROCEDURE</b> .
<b>PLUS-X AC-8</b>	If your current firmware version is lower than version 1.0.16, then see the product-specific section <b>PLUS-X AC-8</b> . If your current firmware version is 1.0.16 or higher, update to the latest version using the <b>BURK FIRMWARE LOADER PROCEDURE</b> .
<b>PLUS-X DUAL IP-8 ADAPTER</b>	If your current firmware version is lower than version 1.0.10, see the product-specific section <b>PLUS-X DUAL IP-8 ADAPTER</b> . If your current firmware version is 1.0.10 or higher, update to the latest version using the <b>BURK FIRMWARE LOADER PROCEDURE</b> .
<b>PLUS-X EM</b>	If your current firmware version is lower than version 1.1.0, see the product-specific section <b>CLIMATE Guard/Plus-X EM</b> . If your current firmware version is 1.1.3 or higher, update to the latest version using the <b>BURK FIRMWARE LOADER PROCEDURE</b> .
<b>PLUS-X GSC ADAPTER</b>	If your current firmware version is lower than version 1.0.10, see the product-specific section <b>PLUS-X GSC ADAPTER</b> . If your current firmware version is 1.0.10 or higher, update to the latest version using the <b>BURK FIRMWARE LOADER PROCEDURE</b> .
<b>PLUS-X ICRU</b>	If your current firmware version is 1.0.18 or lower, contact Burk Technical Support for assistance. If your current firmware version is 1.0.19 or higher, update to the latest version using the <b>BURK FIRMWARE LOADER PROCEDURE</b> .
<b>PLUS-X IIU</b>	If your current firmware version is 1.0.7 or lower, contact Burk Technical Support for assistance. If your current firmware version is 1.1.0 or higher, update to the latest version using the <b>BURK FIRMWARE LOADER PROCEDURE</b> .

## CLIMATE GUARD/PLUS-X EM – SPECIAL INSTRUCTIONS

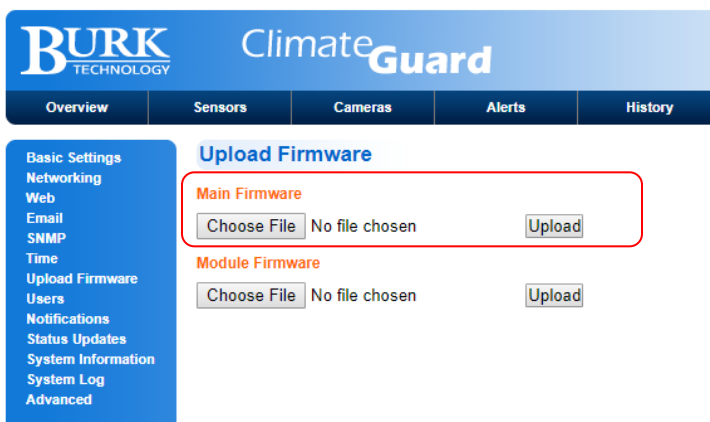
If your current firmware version is greater or equal to 1.1.0, check with Table 1. If your current firmware version is lower than 1.1.0, follow these steps to upgrade to version (1.1.3) before updating to the latest version. The current firmware revision can be found on the System Information page by first clicking on the Setup page of the Climate Guard or Plus-X EM web interface.

1. Visit the Climate Guard or Plus-X EM support page at <https://www.burk.com/downloads>. In the box titled “Firmware & Downloads”, right-click the correct firmware for your unit, as indicated in the table below, and choose **Save Link As** to save a copy of the file on your computer.

**Table 2: Product-Specific Links**

IF YOUR UNIT IS:	RIGHT-CLICK ON:	AND SAVE THE FILE AS:
<b>CLIMATE GUARD</b>	Climate Guard 1.0.x to 1.1.3	Cpu_1_1_3_WithBootLoader.bin
<b>CLIMATE GUARD LT</b>	Climate Guard LT 1.0.x to 1.1.3	CpuLt_1_1_3_WithBootLoader.bin
<b>PLUS-X EM64</b>	Plus-X EM64 1.0.x to 1.1.3	PlusXEM64_1_1_3_WithBootloader.bin
<b>PLUS-X EM32</b>	Plus-X EM32 1.0.x to 1.1.3	PlusXEm32_1_1_3_WithBootLoader.bin

2. To upload the firmware, click the **Upload Firmware** link on the Setup page of the Climate Guard or Plus-X EM web interface. Click **Choose File** under **Main Firmware**, select the file saved above, and click **Upload**.



3. It is recommended that you clear your browser’s cache before continuing to the next step. See **APPENDIX A: CLEARING YOUR BROWSER’S CACHE**.



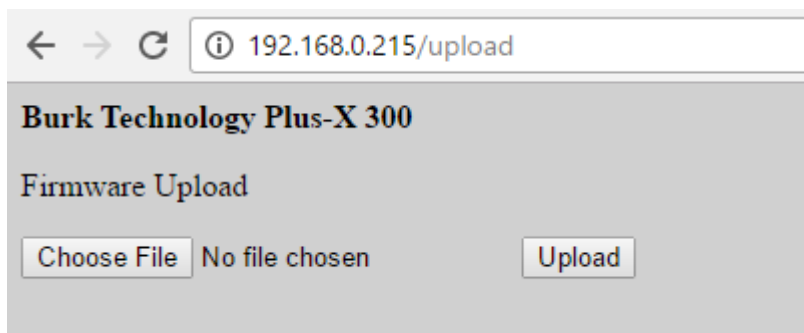
**WARNING: Do not leave this page until the browser refreshes. This may take a few minutes.**

4. Proceed to the **BURK FIRMWARE LOADER PROCEDURE** to update to the latest version of firmware.

## PLUS-X 300 – SPECIAL INSTRUCTIONS

If your current firmware version is greater or equal to 1.0.17, check with Table 1. If your current firmware version is lower than 1.0.17, follow these steps to upgrade to version (1.0.17) before updating to the latest version. The current firmware revision is displayed on the login screen when you first access the Plus-X 300 web interface.

1. Visit <https://www.burk.com/downloads> and select the Plus-X 300 support page. In the box titled “Firmware & Downloads”, right-click *Plus-X 300 1.0.17 With Bootloader*, and choose **Save Link As** to save a copy of the file on your computer.
2. Extract the file *PlusX300\_1\_0\_17\_WithBootloader.bin* and place it in an accessible directory on your PC.
3. Log into the Plus-X 300 web interface and edit the URL in your web browser to `[address]/upload`, where `[address]` is the IP address assigned to the Plus-X 300. This will take you to the upload page.
4. Click **Choose File** to select the firmware file you just saved and click **Upload** to load the new firmware. The Plus-X 300 will reboot after the firmware upload is complete.



5. It is recommended that you clear your browser’s cache before continuing to the next step. See **APPENDIX A: CLEARING YOUR BROWSER’S CACHE**.



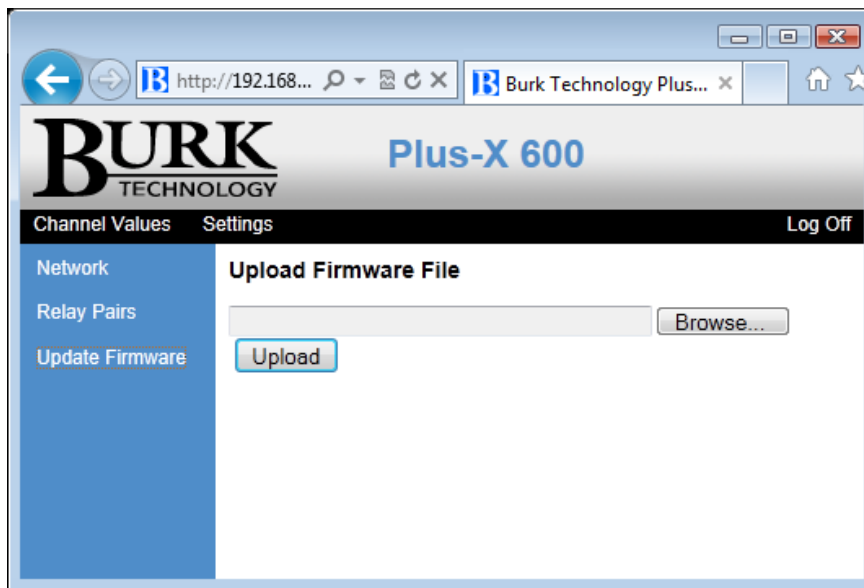
**WARNING: Do not leave this page until the browser refreshes. This may take a few minutes.**

6. Press the Config button three (3) times to reset the unit to factory settings. This will enable DHCP in the Plus-X 300. Enter “PlusX300/” in your browser address bar to automatically find the unit in your network. If your network is not DHCP enabled, then you will need to change the IP address on your computer to 192.168.0.xxx in order to directly communicate with the Plus-X 300 by typing 192.168.0.100 into the address bar of your browser.
7. After making a connection with the Plus-X 300 via your browser, change network settings in the Plus-X 300 to have a static IP address within your network. Remember to change your computer settings back to their original settings before you continue.
8. Proceed to the **BURK FIRMWARE LOADER PROCEDURE** to update to the latest version firmware.

## PLUS-X 600 – SPECIAL INSTRUCTIONS

If your current firmware version is greater or equal to 1.0.10, check with Table 1. If your current firmware version is 1.0.10 or lower, follow these steps to upgrade to version (1.0.10) before updating to the latest version. The current firmware revision is displayed on the login screen when you first access the Plus-X 600 web interface.

1. Visit <https://www.burk.com/downloads> and select the Plus-X 600 support page. In the box titled “Firmware & Downloads”, right-click *Plus-X 600 1.0.10 With Bootloader*, and choose **Save Link As** to save a copy of the file on your computer.
2. Extract the file *PlusX600\_1\_0\_10\_WithBootloader.bin* and place it in an accessible directory on your PC.
3. Direct your browser to the IP address of the Plus-X 600, log on, navigate to the **Settings** page and select **Update Firmware** in the menu at the left side of the screen.
4. Click **Browse** button to select the firmware file you just saved and click **Upload** to load the new firmware. The Plus-X 600 will reboot after the firmware upload is complete.



5. It is recommended that you clear your browser's cache before continuing to the next step. See **APPENDIX A: CLEARING YOUR BROWSER'S CACHE.**



**WARNING: Do not leave this page until the browser refreshes. This may take a few minutes.**

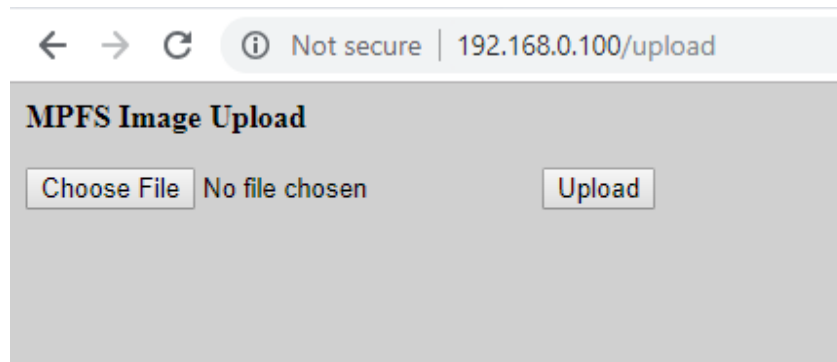
6. Proceed to **BURK FIRMWARE LOADER PROCEDURE** to update to the latest version of firmware.



## PLUS-X AC-8 – SPECIAL INSTRUCTIONS

If your current firmware version is greater or equal to 1.0.16, check with Table 1. If your current firmware version is lower than 1.0.16, follow these steps to upgrade to version (1.0.16) before updating to the latest version. The current firmware revision is displayed on the login screen when you first access the Plus-X AC-8 web interface.

1. Visit <https://www.burk.com/downloads> and select the Plus-X AC-8 support page. In the box titled “Firmware & Downloads”, right-click *Plus-X AC-8 1.0.16 With Bootloader*, and choose **Save Link As** to save a copy of the file on your computer.
2. Extract the file *PlusXAC8\_1\_0\_16\_WithBootloader.bin* and place it in an accessible directory on your PC.
3. Log into the Plus-X AC-8 web interface and edit the URL in your web browser to `[address]/upload`, where `[address]` is the IP address assigned to the Plus-X AC-8. This will take you to the upload page.
4. Click **Choose File** to select the firmware file you just saved and click **Upload** to load the new firmware. The Plus-X AC-8 will reboot after the firmware upload is complete.



5. It is recommended that you clear your browser’s cache before continuing to the next step. See **APPENDIX A: CLEARING YOUR BROWSER’S CACHE.**



**WARNING: Do not leave this page until the browser refreshes. This may take a few minutes.**

6. Proceed to the **BURK FIRMWARE LOADER PROCEDURE** to update to the latest version of firmware.

## PLUS-X DUAL IP-8 ADAPTER - SPECIAL INSTRUCTIONS

If your current firmware version is greater or equal to 1.0.10, check with Table 1. If your current firmware version is lower than 1.0.10, follow these steps to upgrade to version (1.0.10) before updating to the latest version. The current firmware revision is displayed on the login screen when you first access the Plus-X IIU web interface.

1. Visit <https://www.burk.com/downloads> and select the Plus-X Dual IP-8 Adapter support page. In the box titled "Firmware & Downloads", right-click *Plus-X Dual IP-8 Adapter 1.0.10 With Bootloader*, and choose **Save Link As** to save a copy of the file on your computer.
2. Extract the file *PlusX\_IP8\_1\_0\_10\_WithBootloader.bin* and place it in an accessible directory on your PC.
3. Log into the Plus-X Dual IP-8 Adapter web interface and click on the **Upload Firmware** link.
4. Click **Browse** to select the firmware file you just saved and click **Upload** to load the new firmware. The Plus-X Dual IP-8 Adapter will reboot after the firmware upload is complete.



5. It is recommended that you clear your browser's cache before continuing to the next step. See **APPENDIX A: CLEARING YOUR BROWSER'S CACHE.**



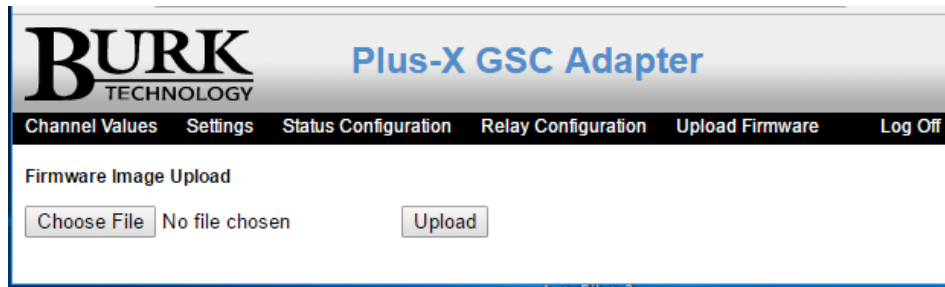
**WARNING: Do not leave this page until the browser refreshes. This may take a few minutes.**

6. Proceed to the **BURK FIRMWARE LOADER PROCEDURE** to update to the latest firmware version.

## PLUS-X GSC ADAPTER – SPECIAL INSTRUCTIONS

Check firmware version on login screen when you first access the Plus-X GSC Adapter web interface. If your current firmware version is greater or equal to 1.0.10, check with Table 1. If your current firmware version is lower than 1.0.10 you cannot upgrade directly to the latest firmware version. First update to version 1.0.14 before updating to the latest version.

1. Visit <https://www.burk.com/downloads> and select the Plus-X GSC Adapter support page. In the box titled "Firmware & Downloads", right-click *Plus-X GSC Adapter 1.0.14 With Bootloader*, and choose **Save Link As** to save a copy of the file on your computer.
2. Extract the file *PlusX\_GSC\_1\_0\_14\_WithBootloader.bin* and place it in an accessible directory on your PC.
3. Log into the Plus-X GSC Adapter web interface and click on the **Upload Firmware** link.
4. Click **Choose File** and select the firmware file you saved above.
5. Click **Upload** to load the new firmware. The Plus-X GSC Adapter will reboot after the firmware upload is complete.



6. It is recommended that you clear your browser's cache before continuing to the next step. See **APPENDIX A: CLEARING YOUR BROWSER'S CACHE.**



**WARNING: Do not leave this page until the browser refreshes. This may take a few minutes.**

7. Proceed to the **BURK FIRMWARE LOADER PROCEDURE** to update to the latest version.

## BURK FIRMWARE LOADER PROCEDURE – APPLICABLE TO ALL PRODUCTS

### CONFIRM CURRENT VERSION OF BURK FIRMWARE LOADER ON YOUR COMPUTER

Significant changes have been made to the Burk Firmware Loader. You must use the current version to update the firmware in your Burk product. To find the current version visit <https://www.burk.com/downloads> and select the support page for the Burk Firmware Loader. If needed, download and run the Burk Firmware Loader executable file. This will install the Burk Firmware Loader on your PC.

### BACK UP YOUR CONFIGURATION

Some firmware updates to ARC Plus, ARC Plus Touch, ARC Plus SL or Arcturus reset the configuration in your unit. Be sure to save a backup configuration using Autoload Plus before proceeding. Networking settings will not change during the update process.

### DOWNLOAD FIRMWARE

Visit <https://www.burk.com/downloads> to select the support page for your unit and download the latest firmware version.

**Note:** For the ARC Plus, ARC Plus SL, ARC Plus Touch and Arcturus you need to un-compress (un-zip) this folder before using it with Burk Firmware Loader. For all other products **DO NOT** un-compress (un-zip ) the downloaded file for your product.

### CONFIGURE WINDOWS FIREWALL

It may be necessary to configure the Windows Firewall to allow the Burk Firmware Loader to communicate with the device. Follow these instructions to configure the Windows Firewall.

1. Click Start > Control Panel > System and Security > Windows Firewall.
2. Select **Allow an app or feature through Windows Firewall.**
3. Select **Allow another program.**

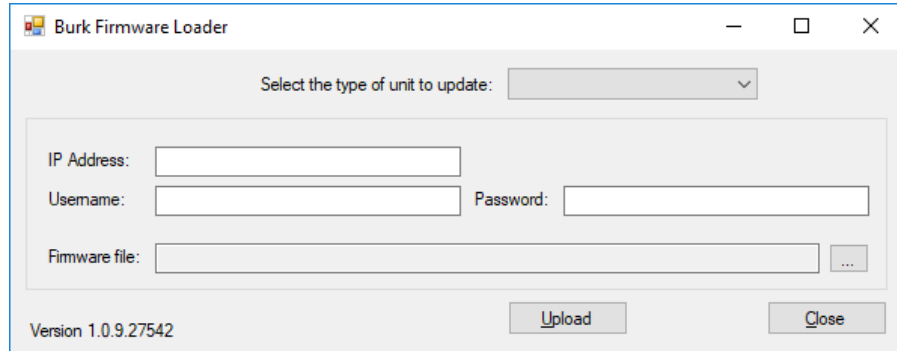
**Note:** If **Allow another program** is un-selectable, click the **Change Settings** button first to unlock it.

4. Click **Browse** and navigate to C:\Program Files(x86)\Burk Technology\Burk Firmware Loader.
5. Select **Burk Firmware Loader** > **Open** > **Add** > **OK.**

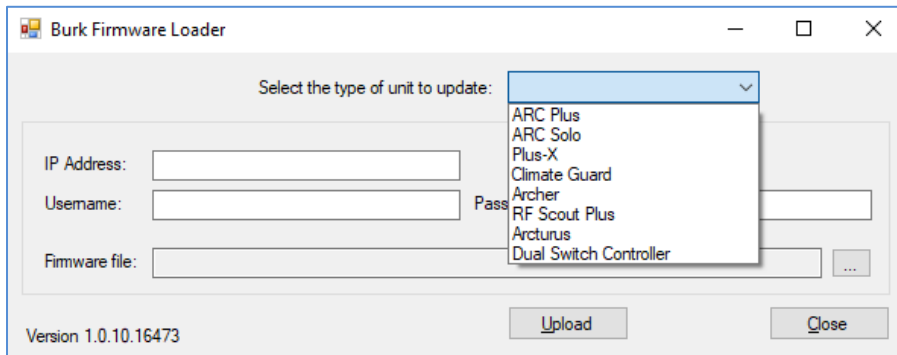
## USING THE BURK FIRMWARE LOADER

To use the Burk Firmware Loader, follow these instructions.

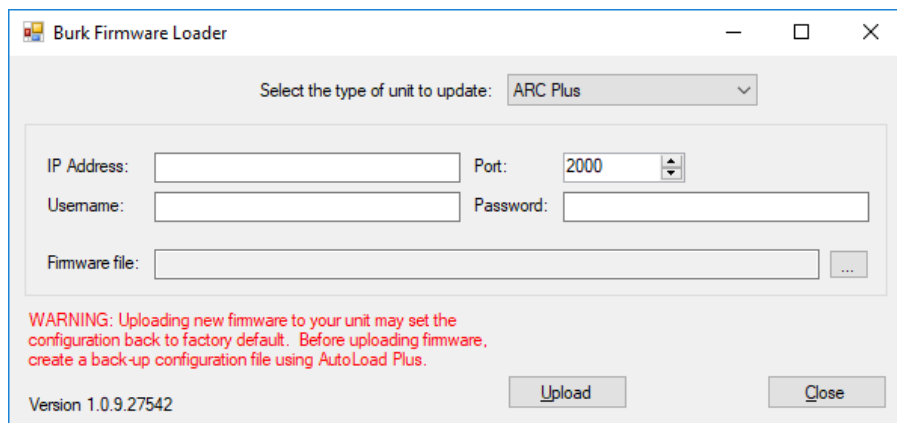
1. Click **Start > All Programs > Burk Technology > Burk Firmware Loader** and launch the program.



2. Select your product type from the dropdown list.



3. Enter your unit's IP Address, Port number (if required), Username and Password.



4. Select the .zip folder or .bin file that you previously saved.

Note: For the ARC Plus, ARC Plus SL, ARC Plus Touch and Arcturus you need to un-compress (un-zip) this folder before using it with the Burk Firmware Loader. For all other products DO NOT un-compress (un-zip) the downloaded file for your product.

5. For Plus-X devices, ARC Solo, and Archer, enable the unit to accept the firmware upload:
  - a. Direct your browser to the IP address of the Plus-X, ARC Solo or Archer unit, Log on and navigate to the Upload Firmware page.
  - b. Click the **Enable Firmware Upload** button at the center of the page.
  - c. Return to the Burk Firmware Loader within three minutes to complete the upload process.
6. Click **Upload** on the Burk Firmware Loader.
7. A notification window will open when the upload is complete. Click **OK**.


This concludes the Burk Firmware Loader procedure.

## APPENDIX A: CLEARING YOUR BROWSER'S CACHE

Each web browser requires a unique set of steps to clear its cache memory. The required steps for selected browsers are detailed below.


---

### FIREFOX VERSION 71

- 1) Click on the menu icon (three horizontal bars) in the upper right corner of the browser window: 
- 2) Select **Options**, then select **Privacy and Security**.
- 3) Scroll down to **Cookies and Site Data** and click the **Clear Data** button.


---

### CHROME VERSION 78

- 1) Click on the menu icon (three vertical dots) in the upper right corner of the browser window: 
- 2) Select **Settings**.
- 3) Click on **Advanced** at the bottom of the page.
- 4) Select **Clear browsing data**.
- 5) Check the box for **Cached images and files**.
- 6) Click the **clear data** button.

---

### EDGE VERSION 44

- 1) Click on the menu icon (three horizontal dots) in the upper right corner of the browser window: 
- 2) Select **Settings** then select **Privacy and Security**.
- 3) Under **Browsing data**, click on **Choose what to clear**.
- 4) Check the box for **Cached data and files**.
- 5) Click the **Clear** button.