

This Quick Start Guide will show you how to set up the ARC Plus SL in six simple steps. For detailed configuration and setup information, visit www.burk.com/downloads, select the ARC Plus SL support page and download the ARC Plus SL Instruction Manual.

1 UNPACKING

In addition to this Quick Start Guide, you will find the following in each package:

- (1) ARC Plus SL Unit
- (2) 3-pin Terminal Block
- (1) Ethernet Cable
- (1) Power Cord



2 NETWORK SETUP

1. The ARC Plus SL ships with a default IP address of 192.168.0.100. You will need to connect a PC with a web browser to the ARC Plus SL at this IP address before you can change the network settings on the unit. One way to do this is to unplug your PC from any other LAN and connect your PC to the ARC Plus SL via a network switch or a cross over Ethernet cable. Then configure your PC with a compatible IP address so that you may connect to the ARC Plus SL. Running Windows, the following steps will allow you to configure your PC with a compatible IP address:

- | | |
|--|---|
| 1 From the Control Panel, select Network Connections. | 5 Select Properties. |
| 2 Double-click the icon for network you will be using. | 6 Choose "Use the following IP address" and enter an IP address of 192.168.0.x, where x is any valid address location except 100. |
| 3 On the General tab, click Properties. | 7 Enter Subnet Mask 255.255.255.0 |
| 4 Click Internet Protocol version 4 "TCP/IPv4". | 8 Click OK. |

2. Open a browser and enter the ARC Plus SL default IP address of 192.168.0.100. Enter the **username: admin** and **password: password** to connect to the ARC Plus SL. Go to the System Tab on the ARC Plus SL and select Networking to change the network information.

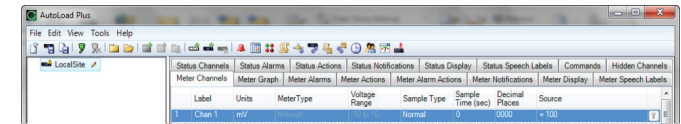
Add the following network information and select enter to confirm the changes.

1. **Private IP Address** – Assign a static IP address. Check with your network administrator. This is the IP address of the ARC Plus SL.
2. **Public IP Address** – The public and private IP addresses should be the same unless you have a multi-site ARC Plus network. This is usually the IP address of the broadband Internet Connection.
3. **Netmask** – Check with your network administrator otherwise the factory default settings can be used.
4. **Gateway** – Check with your network administrator otherwise the factory default settings can be used.
5. **DNS** – Check with your network administrator otherwise the factory default settings can be used.
6. **HTTP Port** – Check with your network administrator. The factory default setting is port 80.
7. **Data Port** – Check with your network administrator. If Cisco devices are used in your network, it is recommended to change the Data Port from 2000 to another port number, for example 4095.

3. To verify communication, open a command prompt on your computer and ping the address you just assigned to the unit to ensure it is correctly configured.

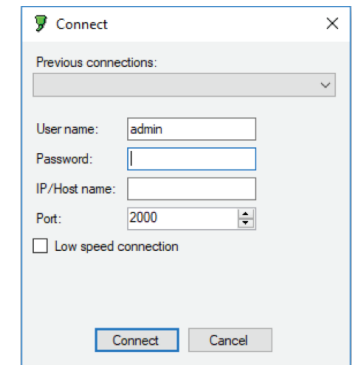
3 INSTALLING AUTOLOAD PLUS

AutoLoad Plus is a Windows application that needs to be installed on your PC. It provides configuration of the ARC Plus SL system including network settings, site names, channel configuration and more.



To download AutoLoad Plus go to www.burk.com/downloads and select the support page for AutoLoad Plus. You will see a link to download the current version of the software.

Launch AutoLoad Plus. The dialog box shown to the right should be displayed. Enter the username, password and IP Address of the ARC Plus SL unit that you want to connect to. Hit "Connect" and AutoLoad Plus will complete the connection to the ARC Plus SL. The system is now ready for configuration.



CUSTOMER SUPPORT

PHONE:

(978) 486 - 3711
M-F 9am - 5pm EST

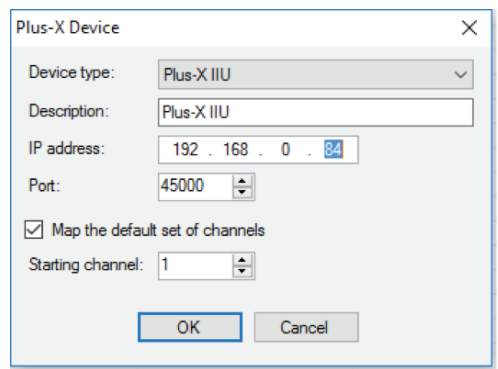
EMAIL:

support@burk.com

4 ADDING PLUS-X DEVICES

To set up a Plus-X device, please refer to the manual for your specific Plus-X unit.

Once the Plus-X device is set up, use AutoLoad Plus to add the Plus-X device to the ARC Plus SL. In the AutoLoad Plus menu, select Edit->Plus-X Devices and click "Add". The dialog box shown below will be displayed.



- Select the type of Plus X device and enter its network information.
- Note:** If adding more than one Plus X device to an ARC Plus, adjust the starting channel so that other assigned channels are not overwritten.
- Select OK to confirm the first Plus X device.
- If adding more than one Plus X device, repeat the same steps.
- Save the configuration by selecting File>Save in AutoLoad Plus.

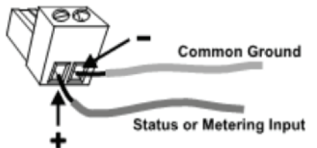
To confirm that everything is communicating, log in to the ARC Plus SL using the web browser. All assigned channels should show their default values.

- Note:** If the meter or status inputs show as offline or a warning is displayed, check the network configuration and ensure the configuration is saved within AutoLoad Plus.

5 CONNECTING STATUS, METERS AND RELAYS ON PLUS-X DEVICES

Connecting a Meter or Status Input

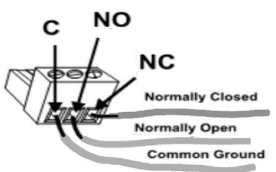
1. Connect your site equipment to the provided push-on block connectors. Secure the wires with the built-in setscrews. The status or metering sample connects to the + terminal, and a common ground connects to the - terminal.



2. Connect the push-on blocks to the rear panel of the Plus-X device with the setscrews facing up. Be sure to precisely align the connector terminals to the + and - contacts on the back panel of the unit.

Connecting a Relay Output

1. Connect your site equipment to the provided three-terminal push-on block connectors. Secure the wires with the built-in setscrews. Connections are standard, from left to right: common (C), normally open (NO), and normally closed (NC).

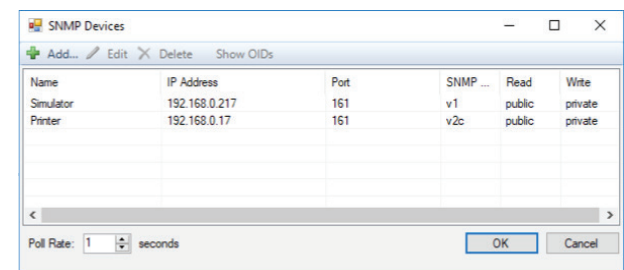


2. Connect the push-on blocks to the rear panel of the Plus-X device with the setscrews facing up. Use care to properly align each terminal with the contacts on the back panel of the unit.

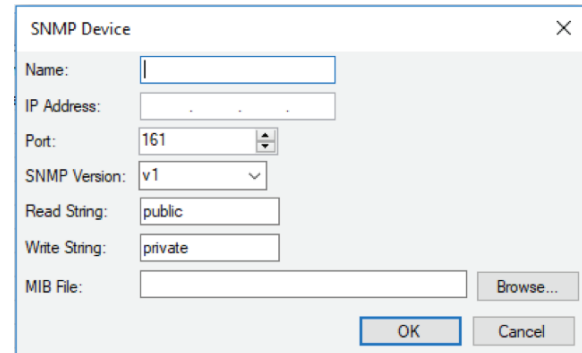
For information on configuring input and output channels and calibrating meter inputs, see the ARC Plus SL Instruction Manual.

6 ADDING SNMP DEVICES

In order to use SNMP Manager functionality within ARC Plus SL, an add-on SNMP Plus license is required. To add SNMP devices to your ARC Plus SL, select Edit>SNMP Devices in the AutoLoad Plus menu. The SNMP Devices dialog box shown below will be displayed, allowing you to add, edit or delete entries in the ARC Plus SL SNMP device list.



To add a new device, Click the "Add" button then assign a name to the unit and enter the IP address in the dialog box shown below. Browse to and select the MIB file for the new SNMP device. The added unit will now show up in the list of SNMP Devices.



AutoPilot® and Jet™ Active Flowcharts Software Licenses

In order to manage multiple remote sites and create your own Custom Views with features like group selection and editing, autoscaling and embedded HTML5 web pages and RTSP cameras an AutoPilot software license is required.

Jet Active Flowcharts, available as an extension of AutoPilot, makes it easy to automate site control by drawing simple flowcharts that describe how the remote control should respond to different conditions.

Refer to the ARC Plus SL Instruction Manual for further information on using AutoPilot and Jet Active Flowcharts.