



Installation Instructions

RSI Recordable Speech Interface

Thank you for purchasing an RSI Recordable Speech Interface for your ARC Plus Touch Remote Control.

The RSI permits dialup access to your ARC Plus Touch, as well as dial-out alarm notifications. It is installed inside the ARC Plus Touch and connects to a standard telephone line. If you are adding the RSI to an ARC Plus Touch in the field, follow these installation instructions.

Complete operating and configuration instructions are in the ARC Plus Touch User Guide, also available at www.burk.com.

Important!

Surge protection on the telephone line is strongly recommended to prevent damage to the ARC Plus system caused by a lightning strike or voltage surge. Burk Technology manufactures the TS-1 transient voltage surge suppressor which protects against repeated surges and requires no maintenance, batteries or external power.

Copyright © 2013 Burk Technology, Inc. All rights reserved. Information in this manual is subject to change without notice

RSI INSTALLATION

Before you begin, make certain that your RSI kit contains the items listed in table 1. Contact support@burk.com if anything is missing. In addition, you will need a #2 phillips head screwdriver.

Note that the RSI itself and the required Data Access Arrangement (DAA) are on separate boards. This is to improve transient immunity, but also permits field replacement of DAA boards.

Included in the RSI Kit:

1	RSI board
1	DAA board
7	6/32 screws
2	84090007 Rev B cable set

table 1.

1	Power off the ARC Plus Touch, loosen five screws on the sides and rear and remove the top cover.
2	Locate the Audio In and Audio Out holes on the rear apron of the ARC Plus Touch.
3	Position the RSI board component side up so that the RCA jacks protrude through the holes.
4	Secure the board with 4 – 6/32 screws.
5	Locate the rectangular cutout marked Line on the rear apron.
6	Position the DAA board component side up so that the RJ-11 jack protrudes through the cutout.
7	Secure the board with 3 – 6-32 screws.
8	Using an 84090007 Rev B cable set, connect DAA J6 to RSI J5. Observe polarity by reference to figure 1.
9	Using an 84090007 Rev B cable set, connect RSI J2 to ARC Plus Touch J1 Observe polarity by reference to figure 1.
10	Verify that an SD card is inserted fully into the SD card slot on the RSI.
11	Replace the cover and tighten all five screws.
12	Refer to the ARC Plus Touch User Guide for configuration and operation instructions.

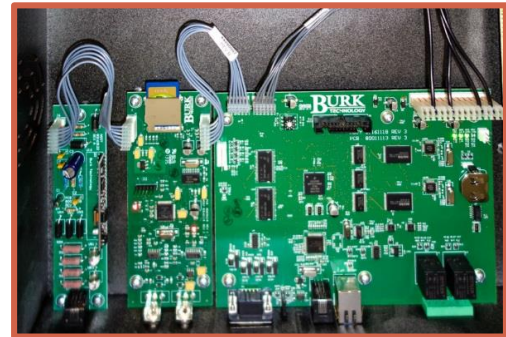


Figure 1.

RSI and DAA boards in ARC Plus Touch Chassis