



Technical Bulletin

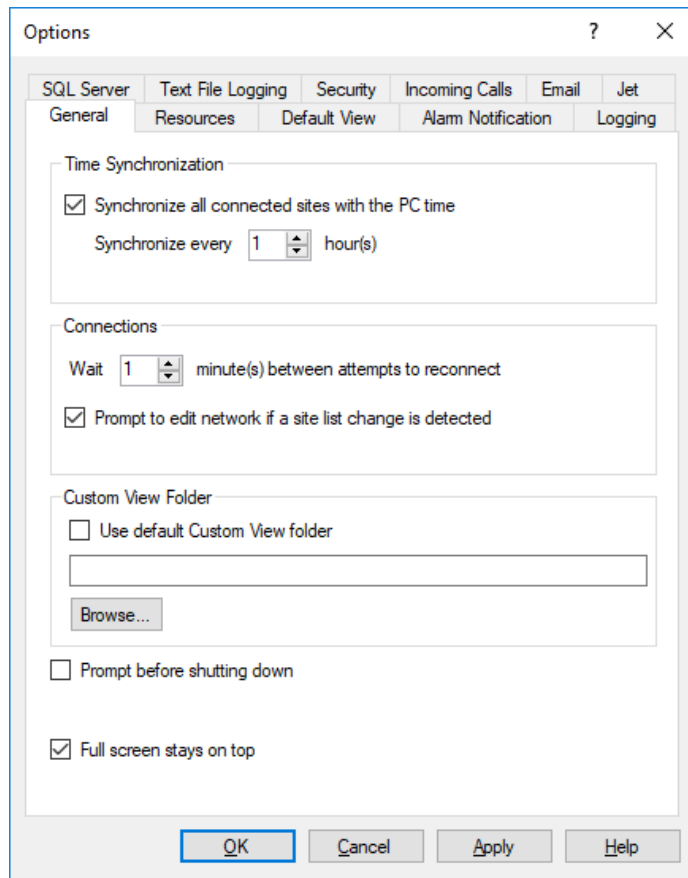
Configuring AutoPilot® to have Operator and Engineering Views

Scope

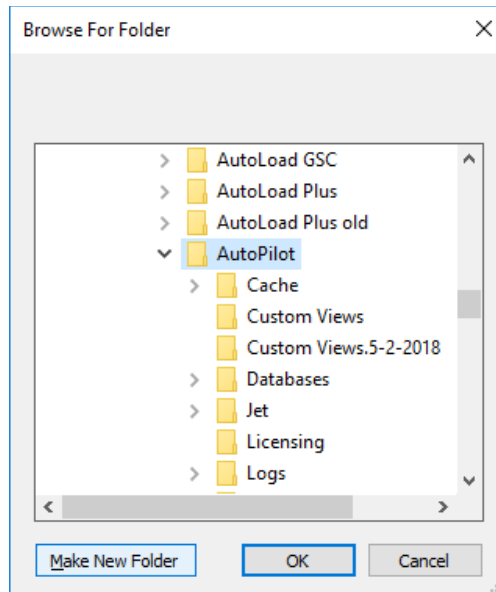
This document defines the procedure for controlling access to separate AutoPilot custom views for operators and engineers through the use of alternative custom view folders and the configuration locking feature in AutoPilot.

Create Secondary Custom View Folder

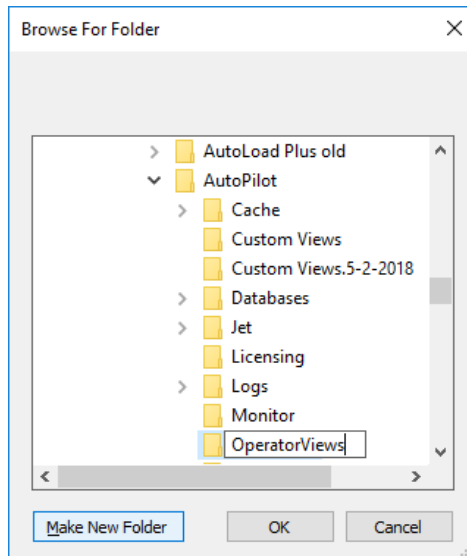
First create a secondary custom view folder. One will store the Operator custom views and one will store the Engineering custom views. Click on the menu **Tools->Options** and on the **General** tab uncheck **Use default Custom View Folder**.



Then click **Browse** and browse to this directory, **C:\ProgramData\Burk Technology\AutoPilot**



Click the **Make New Folder** button and create a folder called **OperatorViews** for example and click OK. Then OK on the Options dialog box to bring you back to Autopilot

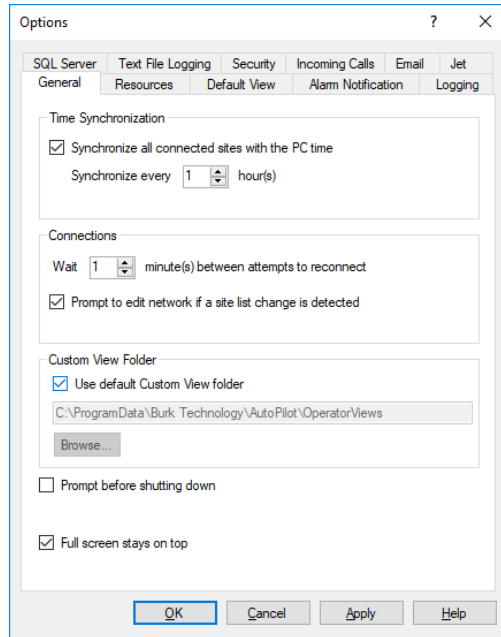


Note: *AutoPilot will only allow saving custom views to the folder specified in the Tools->Options General tab. This requires switching custom view folders to the appropriate folder when creating custom views for Operators and Engineers.*

Create the Custom Views

Create 2 custom views, one that Operators will see that will be stored in the **OperatorViews** folder and one the Engineers will see that will be stored in the default **Custom Views** folder. Start with the operator custom view since AutoPilot is currently configured to save to that folder. Create the operator custom view and save it in

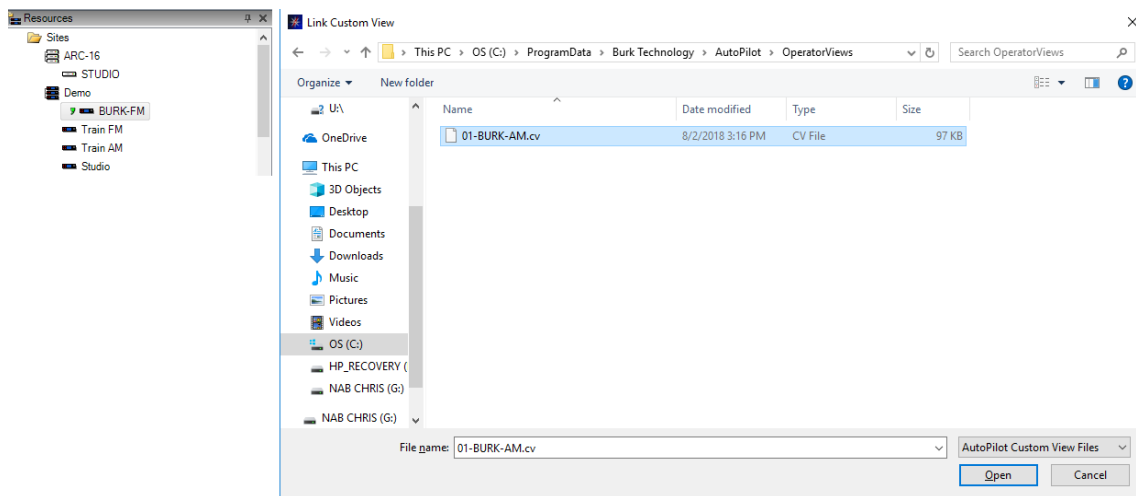
the **OperatorViews** folder. Exit the custom view editor and go back to the **Tools->Options** menu and change the **Custom View Folder** option back to **Use default Custom View Folder**. Click Apply then OK.



Now you can create an Engineering Custom View and save that to the default directory **C:\ProgramData\Burk Technology\AutoPilot\Custom Views**.

Make the site's default view the Operator Custom View

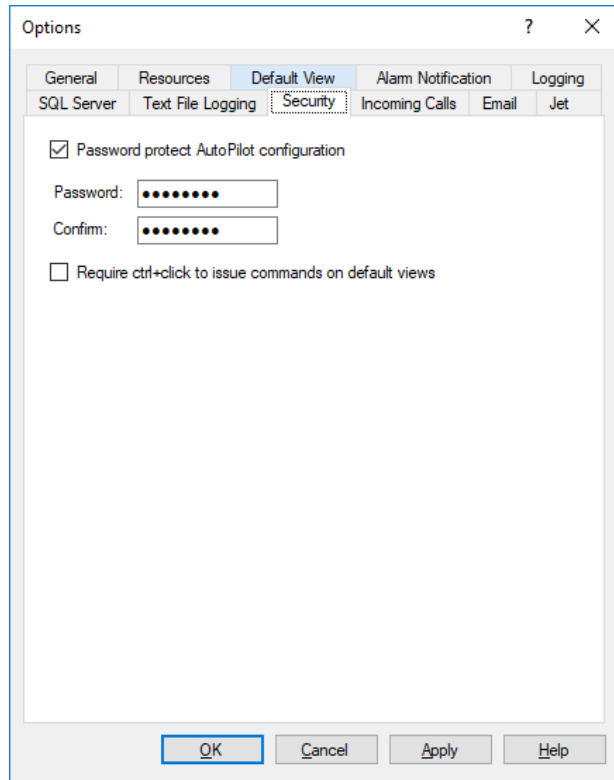
Go back to the **Tools->Option** menu and uncheck the **Use default Custom View Folder** so the **OperatorViews** are active and click **Apply** then **OK**. Next, select the site in the resource window. With the site selected, click on the menu **Edit->Link Custom View** and select the operator custom view from the **OperatorViews** folder. This will prevent the operator from opening the default view for the site which could provide access to unauthorized channels.



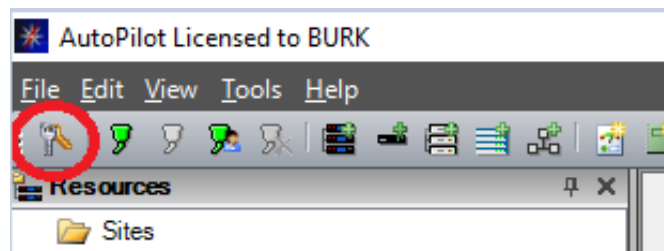
Note: Engineering can revert to the default view at any time by unlocking AutoPilot as explained in the next step, selecting the site and clicking menu **Edit->Unlink Custom View**.

Lock the AutoPilot Configuration

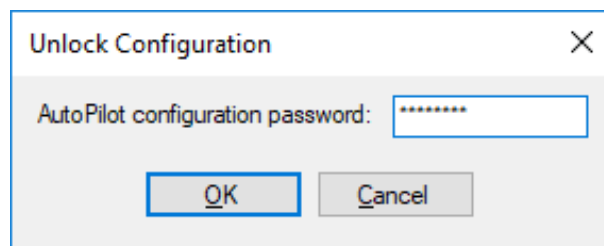
Create an AutoPilot password to lock the configuration then click on the **Security** tab and check the **Password protect AutoPilot configuration** option and set a password so that only Engineering can unlock AutoPilot to change the configuration setup. Click Apply and then OK.



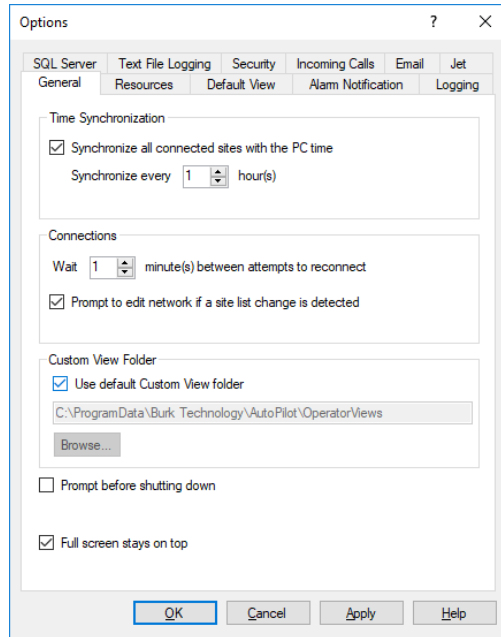
Next, click on the icon under the file menu that looks like a set of keys circled in red below, and that will lock the configuration.



Now, only operator views will be visible. For Engineering to see their custom views, simply click on the keys icon again and you will be prompted to enter the password that was set on the **Security** tab above.



Once unlocked, you can then go back to the menu **Tools->Options**, check the **Use default Custom View Folder** check box, click Apply then OK and you will now have access to the Engineering Custom View.



We are committed to providing you with the best possible service and support for your Burk Technology product. If you should have any concerns or questions, please call us at 978-486-3711.

Thank you,

Burk Technology Technical Support Team

www.burk.com

Rev A