



# Technical Bulletin

## Migrating a Custom View to a New Site

### Scope

This Technical Bulletin applies to single-site Custom Views in AutoPilot® version 2.10.50 or newer.

### Overview

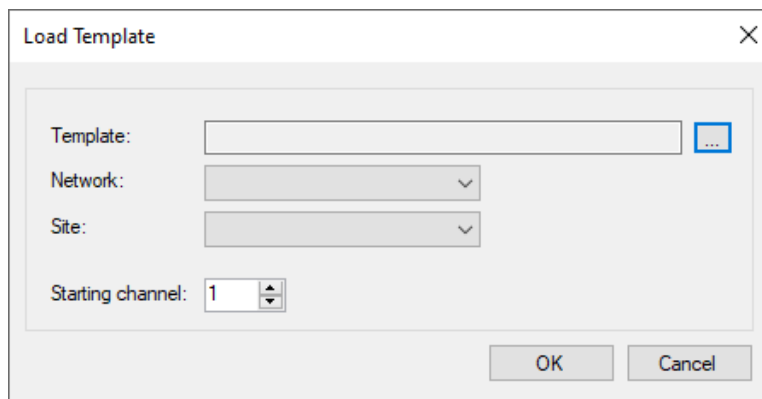
A Custom View that monitors and controls channels from a single ARC Plus or ARC Solo unit can be migrated to a different site by following the procedure outlined below.


### Save the Custom View as a Template

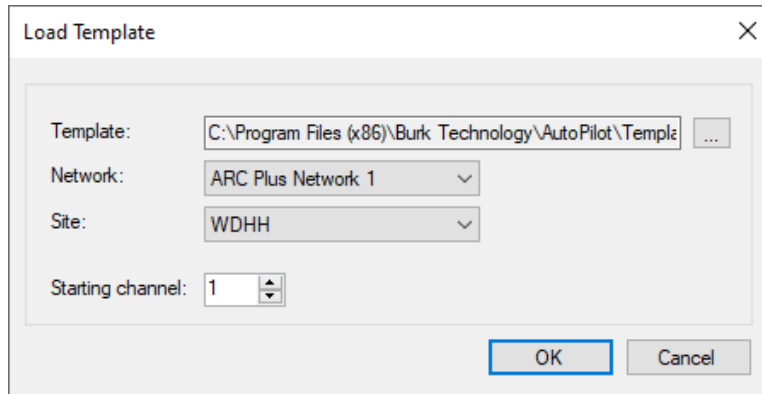
- 1) Navigate to the directory: C:\ProgramData\Burk Technology\AutoPilot\Custom Views and select the file for the Custom View you wish to replicate for use at a different site.
- 2) Copy the Custom View file to this location: C:\Program Files (x86)\Burk Technology\AutoPilot\Templates\Custom Views.
- 3) Rename the file in the new location by changing its file extension from “cv” to “cvt”. This will change the Custom View into a template that can be used to create new Custom Views.

### Create a new Custom View from the Template

- 1) Open AutoPilot, right-click on **Custom View** in the Resources pane and click on **New Custom View....** This will open the Custom View Editor.
- 2) In the Custom View Editor, select **File > New from Template**. The Load Template dialog box will be displayed as shown below.



- 3) Click on the three-dots icon  to the right of the box labeled **Template** and select the template file you renamed above.
- 4) Next select the Network and Site for the ARC Plus or ARC Solo system where you want the new Custom View to run.
- 5) Choose the starting channel for the block of channels on the ARC Plus or ARC Solo that you would like to bind to the custom view. See [Binding Channels in the Custom View](#), below, for additional information on this topic.



### [Binding Channels in the Custom View](#)

The original Custom View copied above was designed to monitor and control a particular remote site. The graphical indicators and controls in the Custom View were associated with meter, status and command channels at that site. When the template is loaded to create a new Custom View, there is a selection for **Starting channel**. If that selection is left at the default setting of 1, then the same channel numbers will be used at the new site. For example, if Forward Power was on meter channel 1 at the original site, and Reflected Power was on meter channel 5, these same channels will be bound to the Custom View at the new site. If, on the other hand, a **Starting channel** of 10 had been selected, then the Forward Power and Reflected Power indicators would be bound to channels 10 and 15, respectively, at the new site.

This direct or offset binding of channel numbers can be used very effectively if you have two or more sites with similar channel configurations or are configuring and deploying multiple sites using a common list of equipment. However, it is often the case that the channels at the new site have been configured in a different sequence than the channels at the original site. In these cases, the Custom View Editor can be used to bind the Custom View to the correct channels at the new site. Right-click on the new Custom View in the AutoPilot Navigator pane and select **Edit Custom View...** This will open the Custom View Editor. In the editor, select an indicator or control then modify the **Channel Adapter** or **Command Adapter** settings in the Properties pane at the right side of the display.

For additional information on editing Custom Views, please refer to the [AutoPilot Instruction Manual](#).

We are committed to providing you with the best possible service and support for your Burk Technology product. If you should have any concerns or questions, please call us at 978-486-3711.

Thank you,  
Burk Technology Technical Support Team  
[www.burk.com](http://www.burk.com)