



Technical Bulletin

Removing Macros from a Lynx Configuration Archive File

Scope

This document outlines the process for removing macros from a Lynx configuration archive file (.set) so the file can be imported into the ARC Plus configuration using the AutoLoad Plus GSC/VRC import wizard.

Synopsis

When upgrading from the GSC or VRC remote control systems, the Lynx configuration archive file can be imported into the ARC Plus. However, GSC/VRC macros cannot be imported into the ARC Plus system. All macros must be removed from the Lynx configuration archive file before the file can be imported to the ARC Plus configuration. After the Lynx archive file has been imported, the macros can be rebuilt using the AutoLoad Plus macro editor or Jet Active Flowcharts.

Removing Macros from a Lynx Configuration Archive

If you already have a Lynx configuration archive file, start the Lynx software and skip to step 4.

1. Start the Lynx software and connect to your GSC or VRC remote control system.
2. Select the desired GSC or VRC site within the site list and then from the Lynx menu select **Site->Selected Unit->Configuration** to bring up the Unit Configuration Dialog.



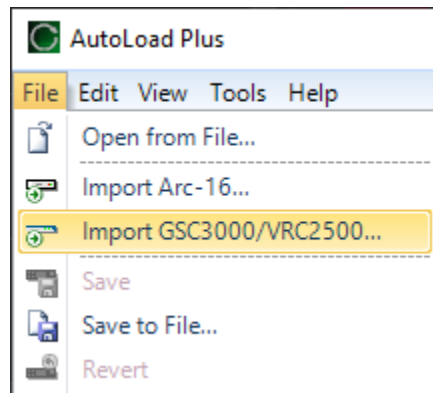
3. From this dialog select **File->Save in Archive...** to create a configuration archive (.set) file that will be modified in the next steps.
4. Now disconnect from the GSC/VRC system by clicking on the site and selecting **Site->Disconnect**. This will prevent any inadvertent changes to the live configuration.

5. From the Lynx menu select **File->Offline Configuration** and choose the proper site that matches your existing GSC or VRC I/O unit. The options will be **GSC3000 I/O 16**, **GSC3000 I/O 8** or **VRC2500 I/O**. This will bring up the offline version of the Unit configuration dialog.
6. Select **File->Open Archive...** and load the Lynx configuration archive file saved in step 3 above.
7. Select **File->Save in Archive...** and create a new file name so the original archive file remains intact.
8. Select **File->Macro Editor...**
9. Select **File->Save to Archive...** and select the new file created in step 7 then click save. This will clear out all Macros that may be in the archive file by writing an empty macro set to it. You can then close the Macro Editor dialog.
10. From the Unit Configuration dialog select **File->Open Archive...** and select the archive file from step 7.
11. Select **File->Save in Archive...** and overwrite the file created in step 7. This will recombine the empty macro set and the rest of the configuration in the archive.

The archive file is now ready to be imported into the ARC Plus using the AutoLoad Plus import GSC/VRC wizard.

Importing GSC/VRC Archives

To import your settings, first start the AutoLoad Plus software and connect to the ARC Plus unit. Click on the ARC Plus site and select **Import GSC3000/VRC2500...** from the File menu in AutoLoad Plus.



The wizard will prompt you for your GSC/VRC archive file and then allow you to choose which settings to import. For each setting, use the Import checkbox to indicate that AutoLoad should import that setting. Follow the onscreen instructions to complete the wizard.

Thank you,

Burk Technology Technical Support Team
www.burk.com

We are committed to providing you with the best possible service and support for your Burk Technology product. If you should have any concerns or questions, please call us at 978-486-3711.