



Technical Bulletin

Updating Firmware in the Plus-X ICRU

Scope

This document defines the procedures for updating firmware in the Plus-X ICRU. If your Plus-X ICRU unit has current firmware revision 1.0.18 or lower, please contact Burk Technical Support for information regarding firmware upgrades.

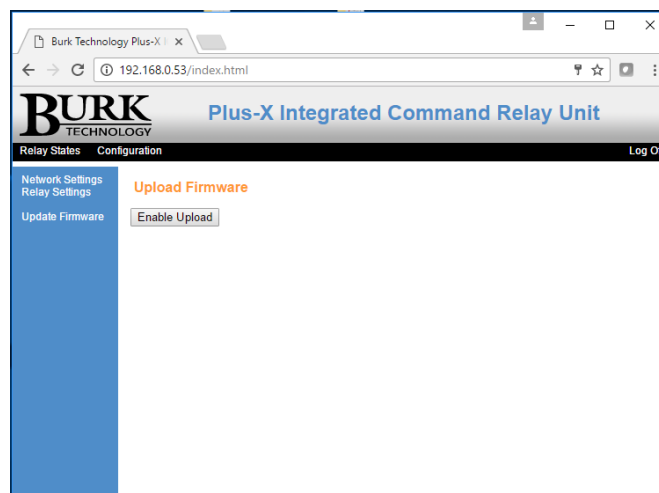
Uploading New Firmware

If your Plus-X ICRU unit is currently running firmware version 1.0.19 or higher, continue with this procedure. The firmware revision is displayed on the login screen when you first access the Plus-X ICRU web interface.

Visit www.burk.com/downloads, select the Plus-X ICRU support page, then download and run the Burk Firmware Loader executable file. This will install the Burk Firmware Loader on your PC.

Also from the Plus-X ICRU support page, download the zip folder *Plus-X ICRU 1.0.x* and place it in an accessible directory on your PC. It is not necessary to extract files from this zip folder. The Burk Firmware Loader will operate directly on the zip folder itself. However, you may wish to extract the Release Notes file and the firmware upload procedure for reference.

Direct your browser to the IP address of the Plus-X ICRU, log on, navigate to the Settings page and select **Update Firmware** in the menu at the left side of the screen.



Click **Enable Upload** to prepare the Plus-X ICRU to receive the new firmware.

It may also be necessary to configure the Windows Firewall to allow the Burk Firmware Loader to communicate with the Plus-X ICRU. This can be done as follows:

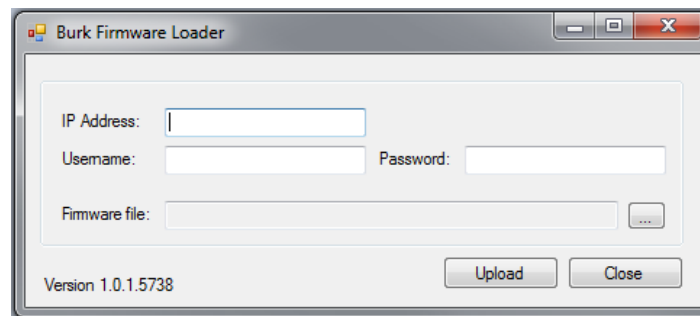
1. Click **Start > Control Panel** and select **Windows Firewall**.
2. Select **Allow a Program or feature through Windows firewall**.
3. Select **Allow another program**.

NOTE: If the Allow another program button is un-selectable, click the Change Settings button first to unlock this.

4. Now click **browse** and search for the file C:\Program Files(x86)\Burk Technology\Burk Firmware Loader.
5. Select **BurkFirmwareLoader** and click **Open** and then click **Add**.

Now run the Burk Firmware Loader as follows:

1. Click **Start>All Programs>Burk Technology>Burk Firmware Loader** and launch the program. The window below will open.



2. Enter the IP Address of the Plus-X ICRU, the Username and the Password. Select the Plus-X ICRU zip folder that you previously saved and click **Upload**.

NOTE: The Plus-X ICRU firmware folder is a compressed (zipped) folder. You **do not** need to un-compress (un-zip) this folder before using it with the Burk Firmware Loader.

3. A notification window will open when the upload is complete. Click **OK**.

We are committed to providing you with the best possible service and support for your Burk Technology product. If you should have any concerns or questions, please call us at 978-486-3711.

Thank you,

Burk Technology Technical Support Team

www.burk.com

Rev A