



Technical Bulletin

Using Weather Maps in Custom Views

Scope

This document outlines the steps required to incorporate weather maps into AutoPilot® Custom Views taking into account recent changes to the National Weather Service web site.

Summary

The following sections describe two methods for incorporating weather maps into your Custom Views. The choice of which method to use should be based on how you intend to interact with the map in the Custom View.

The first method described below uses a web page object linked to the new radar.weather.gov web site. This approach has the advantage that the user can scroll, zoom and interact with the web site within the custom view. However, it is not possible to overlay graphical objects such as status LEDs on the weather.gov map.

If you plan to overlay objects on top of the weather map, the second method should be used. This method uses a weather map object linked to the Weather Underground web site at wunderground.com/radar/us.

Web Page Object Using the National Weather Service

1. Open a web browser and navigate to radar.weather.gov . Zoom in on the area of the map that you want to display in the Custom View. This area will be your starting point on the weather map whenever the Custom View is opened .

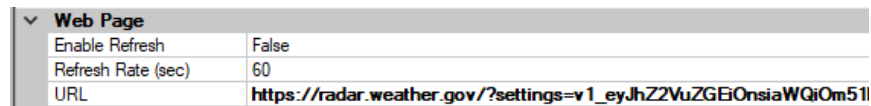


2. Start AutoPilot and edit an existing Custom View by right clicking on the Custom View in the resources panel and selecting **Edit Custom View...** or create a new view by right clicking on the Custom View folder and selecting **New Custom View...**
3. In the Custom View Editor Toolbox panel, click on **General** then drag a **Web Page** object onto the canvas.



4. The weather.gov URL in your web browser will look similar to this:
https://radar.weather.gov/?settings=v1_eyJhZ2VuZGEiOnsiaWQiOm51bGwslmNlbnRlciI6Wy03MS45MTQsNDluMTYxXSwiem9vbSI6N30sImJhc2UiOiJzdGFuZGFyZCIsImNvdW50eSI6ZmFsc2UsImN3YSI6ZmFsc2UsInN0YXRlljpmYWxzZSwibWVudSI6dHJ1ZSwic2hvcnRGdXNlZE9ubHkiOmZhbHNlfQ%3D%3D#/

Copy the URL from your browser and paste it into the URL property of the web page object in the AutoPilot Custom View Editor.



The default values for Enable Refresh and Refresh Rate can be left in place as shown above. These values do not affect the operation of the weather map.

5. Adjust the size and position of the weather map as desired then save the Custom View and close the Custom View Editor.
6. Display the live Custom View by selecting it in the AutoPilot resources panel. Click on the triangle play button at the bottom of the web page object to start the weather animation.



You can zoom in and out on the weather map using the mouse wheel or by clicking the map + and - signs. You can also reposition the map by clicking and dragging with the mouse. Whenever you navigate away from the Custom View and come back to it, the map will automatically reposition itself based on the original link you provided in the Custom View editor.

Weather Map Object Using Weather Underground

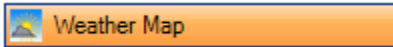
1. Open a web browser and navigate to wunderground.com/radar/us.
2. From the US Regions drop down box select the region of interest. Then click the animate button to get an animated version of the weather map.

Hartford, CT Regional Radar



3. Start AutoPilot and edit an existing custom view by right clicking on the Custom View in the AutoPilot resources panel and selecting **Edit Custom View...** or create a new view by right clicking on the Custom View folder and selecting **New Custom View...**

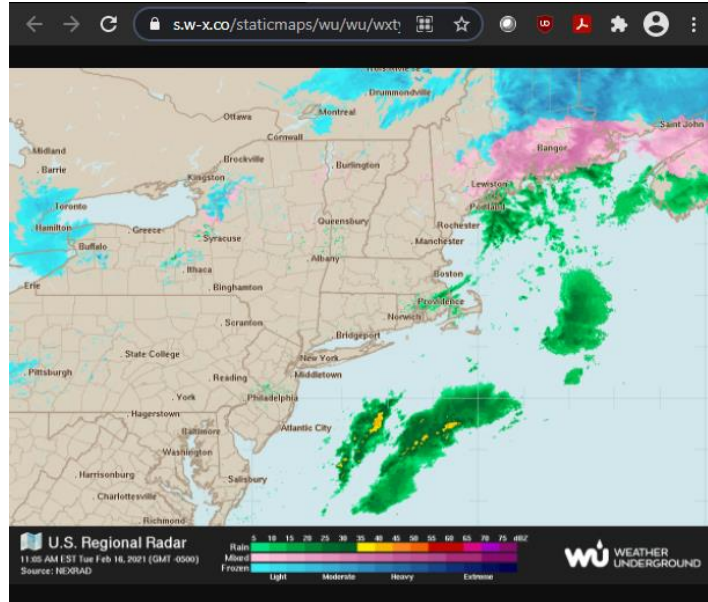
- In the Custom View Editor Toolbox panel, click on **General** then drag a **Weather Map** object onto the canvas.



- In your web browser, just below the weather map, click on **Image Link**.



This will open a new tab to the animated weather map you selected.



- Copy the URL from your browser window and paste it into the URL property of the weather map object in the AutoPilot Custom View Editor.

Picture	
Loop	False
Refresh Rate (sec)	600
Region	National
Show Update Time	False
URL	https://s.w-x.co/staticmaps/wu/wu/wxtype1200_cur/ushfd/animate.png

The default values for Loop, Refresh Rate, Region and Show Update Time can be left in place as shown above. These values do not affect the operation of the weather map.

- Adjust the size and position of the weather map as desired then save the Custom View and close the Custom View Editor.

Using this method will allow you to overlay graphical objects like status LEDs on top of the weather map.

Thank you,

We are committed to providing you with the best possible service and support for your Burk Technology product. If you should have any concerns or questions, please call us at 978-486-3711.